



goldwingdocs.com

Everything Technical about the Honda Goldwing

[Skip to content](#)

Search...	Search
Advanced search	

- [Manuals](#) • [Message Board](#) • [Member Pictures](#) • [How-To Articles](#) • [Vendors](#) • [Store](#)
 - [Classifieds](#) • [News](#)
- [Board index](#) < [GL1500](#) < [GL1500 DIY Articles](#)
- [Change font size](#)
- [Print view](#)
- [FAQ](#)
- [Register](#)
- [Login](#)

[Disassembling & Fixing GL1500 CD/Radio](#)

[Post a reply](#)

Search this topic...	Search
----------------------	--------

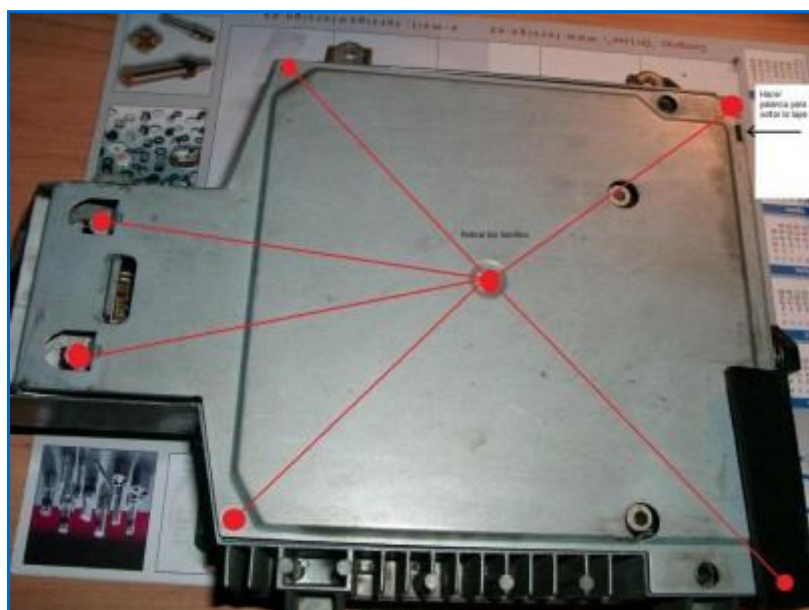
12 posts • Page **1** of **1**

[Disassembling & Fixing GL1500 CD/Radio](#)

 by [jadf](#) » Mon Dec 21, 2009 3:00 pm



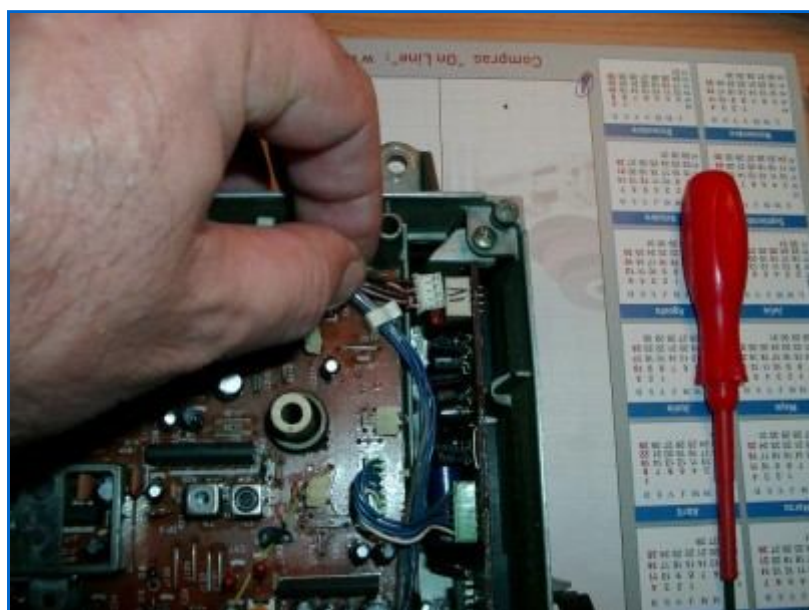
Remove the four screws



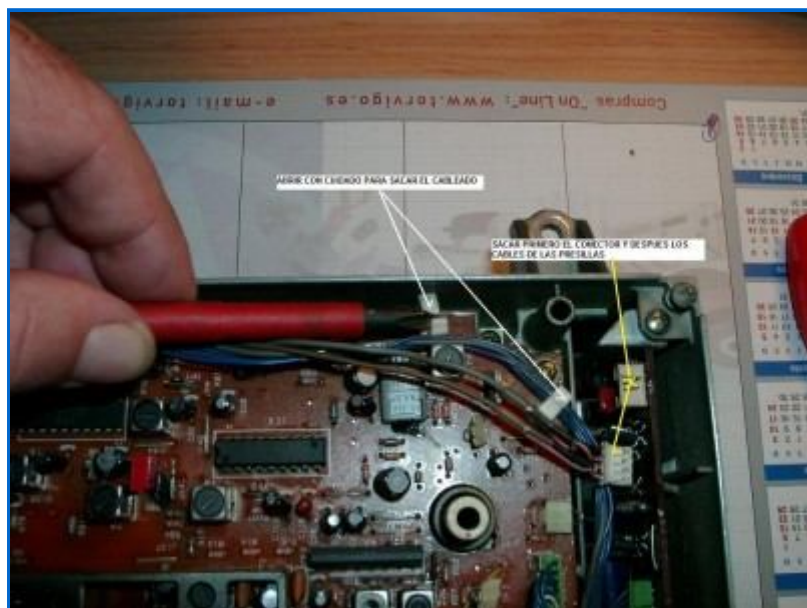
SCORED SCREWS REMOVE



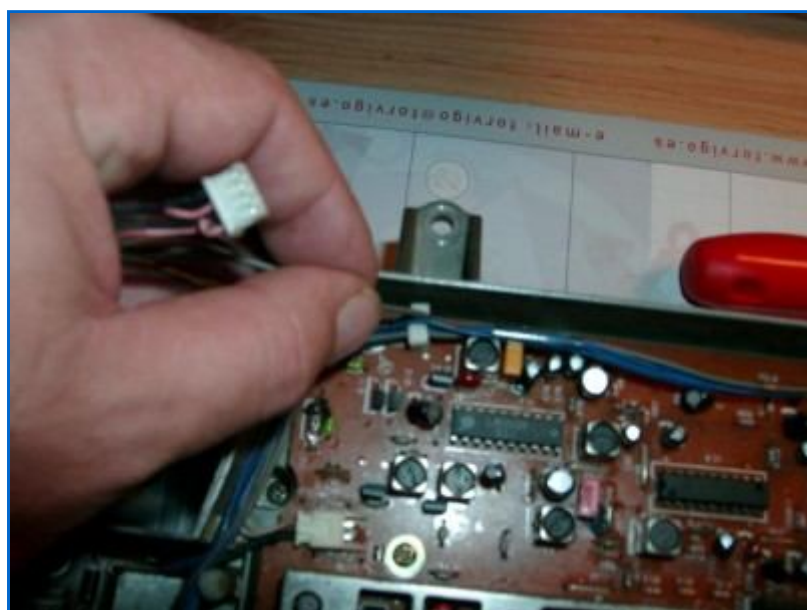
REMOVING THE CONNECTORS



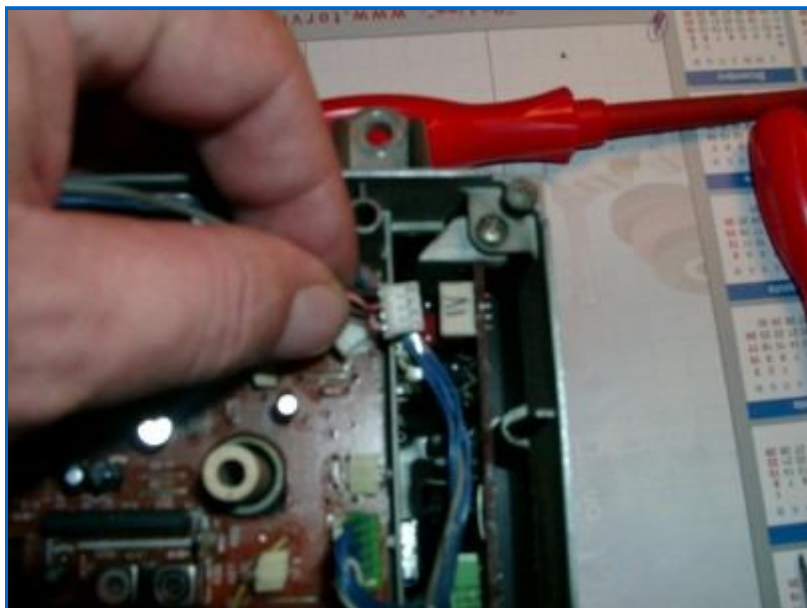
REMOVING THE CONNECTORS



SEPARATE CAREFULLY AND REMOVE THE CABLES



REMOVING THE CONNECTORS



REMOVING THE CONNECTORS



REMOVING THE CONNECTORS



[jadf](#)

Posts: 12

Joined: Tue Oct 06, 2009 3:49 pm

Location: Europe (Spain)

Motorcycle: 1991 GL1500SE

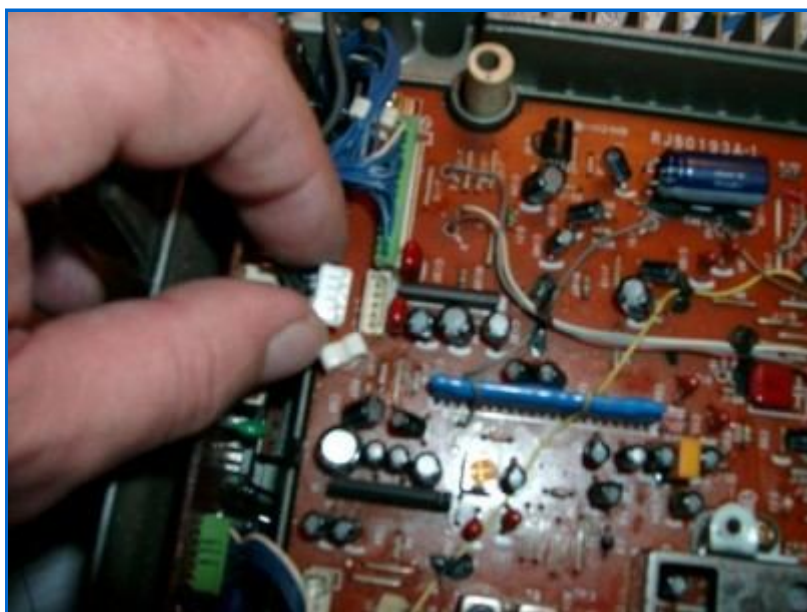
[Top](#)

[Disassembling & Fixing GL1500 CD/Radio](#)

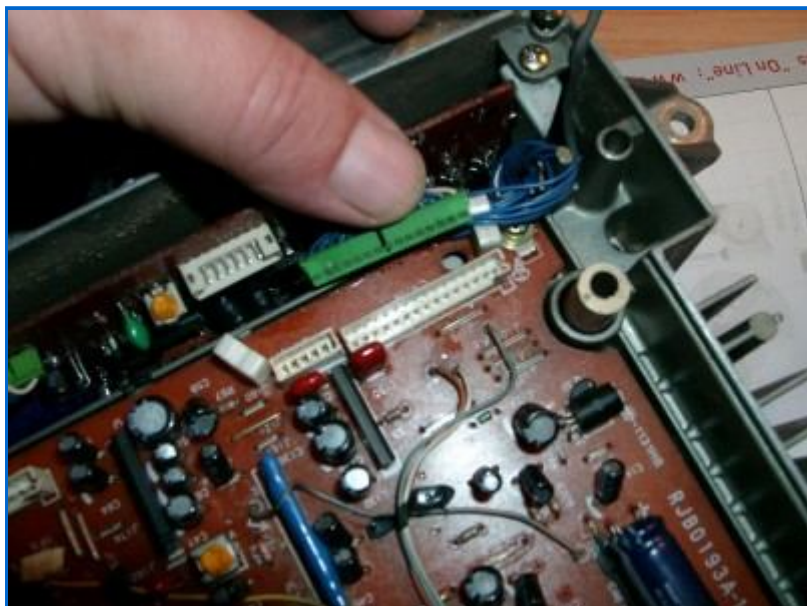
 by [jadf](#) » Mon Dec 21, 2009 4:14 pm



REMOVE CONNECTOR



REMOVE CONNECTOR



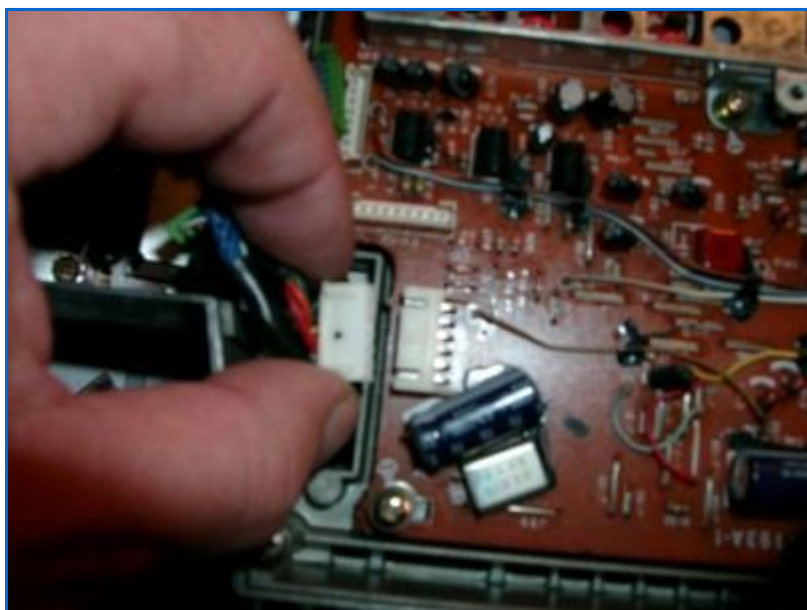
REMOVE CONNECTOR



REMOVE CONNECTOR



REMOVE CONNECTOR



REMOVE CONNECTOR



REMOVE CONNECTOR



REMOVE SCREW



[jadf](#)

Posts: 12

Joined: Tue Oct 06, 2009 3:49 pm

Location: Europe (Spain)

Motorcycle: 1991 GL1500SE

[Top](#)

Disassembling & Fixing GL1500 CD/Radio

by [jadf](#) » Mon Dec 21, 2009 4:22 pm



REMOVE SCREW



REMOVE SCREW



REMOVE SCREW



REMOVE SCREW



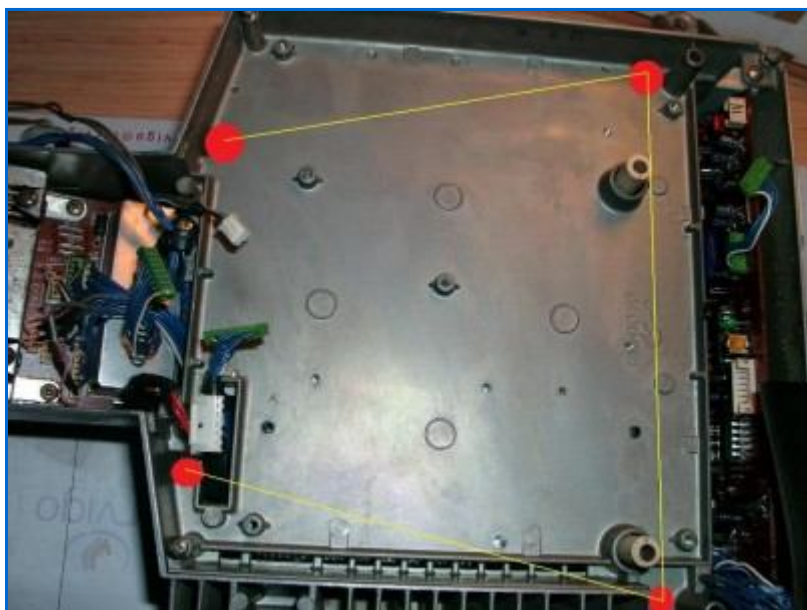
REMOVE SCREW



TOTAL SIX



PULL BRIDGE PLATE AND SALE



REMOVE SCREWS



[jadf](#)

Posts: 12

Joined: Tue Oct 06, 2009 3:49 pm

Location: Europe (Spain)

Motorcycle: 1991 GL1500SE

[Top](#)

Disassembling & Fixing GL1500 CD/Radio

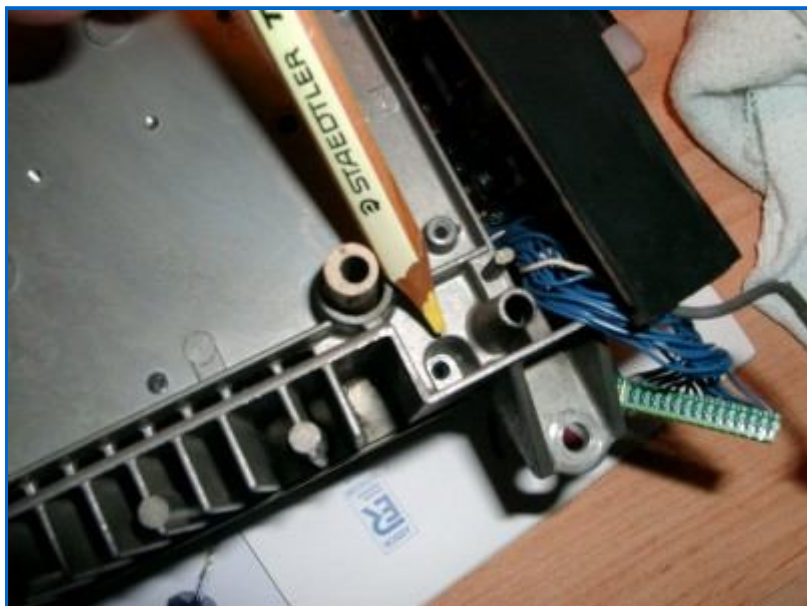
 by [jadf](#) » Mon Dec 21, 2009 4:34 pm



REMOVE SCREWS



REMOVE SCREWS



REMOVE SCREWS



REMOVE SCREWS



REMOVE CONTROLS AND RUBBER SEALS



FOLLOW THE STEPS, 1 Press, 2 DO LEVER, 3 THE CONNECTOR become anchored in the BASE



TOP



BUTTON

[jadf](#)**Posts:** 12**Joined:** Tue Oct 06, 2009 3:49 pm**Location:** Europe (Spain)

Motorcycle: 1991 GL1500SE

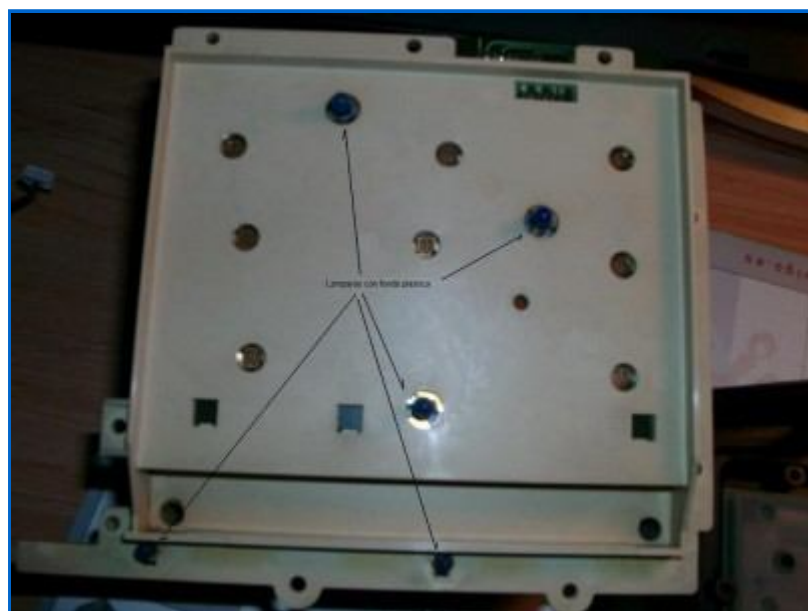
[Top](#)

Disassembling & Fixing GL1500 CD/Radio

by [jadf](#) » Mon Dec 21, 2009 4:51 pm



REMOVE SCREWS AND LIFT



LAMPS AND NOW WE CAN CHANGE THAT ARE RENDERED



Remove the RUBBER TO GET TO THE CONTROLS



ORDER OF PARTS



SUMMARY OF ALL PARTS



CLEAN FOR MOUNTING



CHECK STATUS OF LAMPS



THE END



[jadf](#)

Posts: 12

Joined: Tue Oct 06, 2009 3:49 pm

Location: Europe (Spain)

Motorcycle: 1991 GL1500SE

[Top](#)

[Re: Disassembling & Fixing GL1500 CD/Radio](#)

 by [WingAdmin](#) » Mon Dec 21, 2009 5:10 pm

Thanks jadf! This is an excellent pictorial!



[WingAdmin](#)

Site Admin

Posts: 974

Joined: Fri Oct 03, 2008 5:16 pm

Location: Strongsville, OH

Motorcycle: 1982 GL1100A Aspencade

[Top](#)

[Re: Disassembling & Fixing GL1500 CD/Radio](#)

 by [fs259](#) » Wed Dec 23, 2009 7:43 am

Good timing! I started disassembly yesterday... so very usefull to me.

What I'm still searching for is the light bulbs (both types). That's why I took it apart; I want to replace them but I can't find any supplier.

I already know the partnumbers; XAMR001SA and XAMR011SA (Panasonic).

Does anyone have any suggestions?

Frank

[fs259](#)

Posts: 7

Joined: Tue Dec 22, 2009 3:38 pm

Location: drunen, netherlands

Motorcycle: 1998 gl1500se

1997 gl1500se

1976 gl1000 k2

[Top](#)

[Re: Disassembling & Fixing GL1500 CD/Radio](#)

by [WingAdmin](#) » Wed Dec 23, 2009 9:24 am

I don't know if it is the case here; but I have successfully done this in a car before. The light bulbs I replaced had a rubbery sheath (in this case, it would be blue) over top of the light bulb. I was able to peel the rubber sheath off the existing bulb, find a similar sized bulb, use it and put the sheath over it.

Of course, if this was my bike, I think I'd be looking to figure out how to replace the light bulbs with LEDs, so I wouldn't have to be doing this again anytime soon. 😊



[WingAdmin](#)

Site Admin

Posts: 974

Joined: Fri Oct 03, 2008 5:16 pm

Location: Strongsville, OH

Motorcycle: 1982 GL1100A Aspencade

[Top](#)

[Re: Disassembling & Fixing GL1500 CD/Radio](#)

by [jadf](#) » Wed Dec 23, 2009 12:23 pm

Hi, Frank cyclemas searches.

http://www.cyclemaxohio.com/1500_lights



[jadf](#)

Posts: 12

Joined: Tue Oct 06, 2009 3:49 pm
Location: Europe (Spain)
Motorcycle: 1991 GL1500SE

[Top](#)

[Re: Disassembling & Fixing GL1500 CD/Radio](#)

 by [fs259](#) » Thu Dec 24, 2009 4:47 am

Hi Jadf,

I already knew this site and have been searching it for the bulbs. Perhaps I overlooked them, but I can't find what I need over there.

Did you actually find the lights at this store or is it just a suggestion?

[fs259](#)

Posts: 7

Joined: Tue Dec 22, 2009 3:38 pm

Location: drunen, netherlands

Motorcycle: 1998 gl1500se

1997 gl1500se

1976 gl1000 k2

[Top](#)

[Re: Disassembling & Fixing GL1500 CD/Radio](#)

 by [jadf](#) » Sat Dec 26, 2009 11:22 am

was a suggestion, since they often have almost everything



[jadf](#)

Posts: 12

Joined: Tue Oct 06, 2009 3:49 pm

Location: Europe (Spain)

Motorcycle: 1991 GL1500SE

[Top](#)

[Re: Disassembling & Fixing GL1500 CD/Radio](#)

 by [fs259](#) » Tue Dec 29, 2009 3:23 pm

Great!

Found the original bulbs.

They should be arriving any day now.

Hope I still remember how to get the radio back together 😊

[fs259](#)

Posts: 7

Joined: Tue Dec 22, 2009 3:38 pm

Location: drunen, netherlands

Motorcycle: 1998 gl1500se

1997 gl1500se

1976 gl1000 k2

[Top](#)

All posts

Post time

Ascending

Go

[Post a reply](#)

12 posts • Page 1 of 1

[Return to GL1500 DIY Articles](#)

GL1500 DIY Articles

Go

Who is online

Users browsing this forum: No registered users and 1 guest

- [Board index](#)
- [The team](#) • [Delete all board cookies](#) • All times are UTC - 5 hours [DST]

Powered by [phpBB](#) © 2000, 2002, 2005, 2007 phpBB Group

