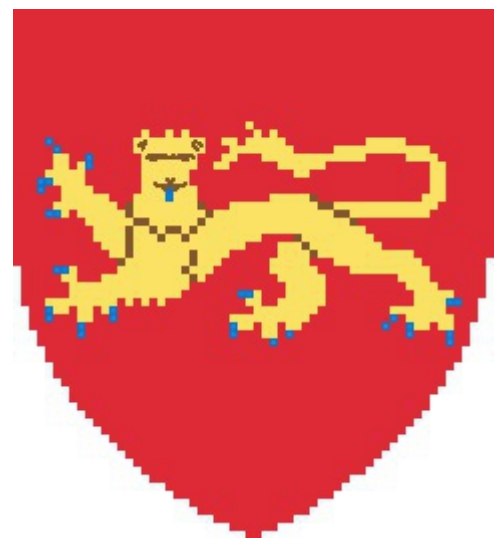
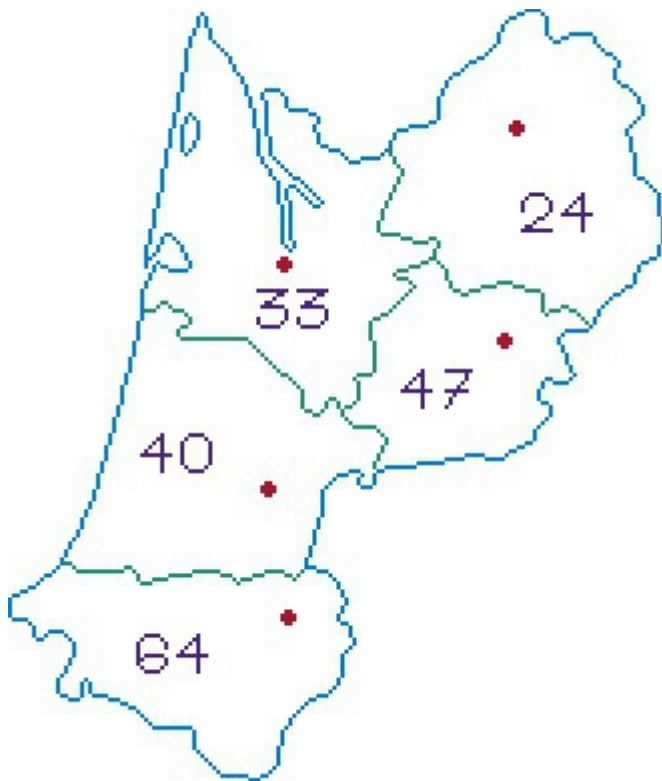


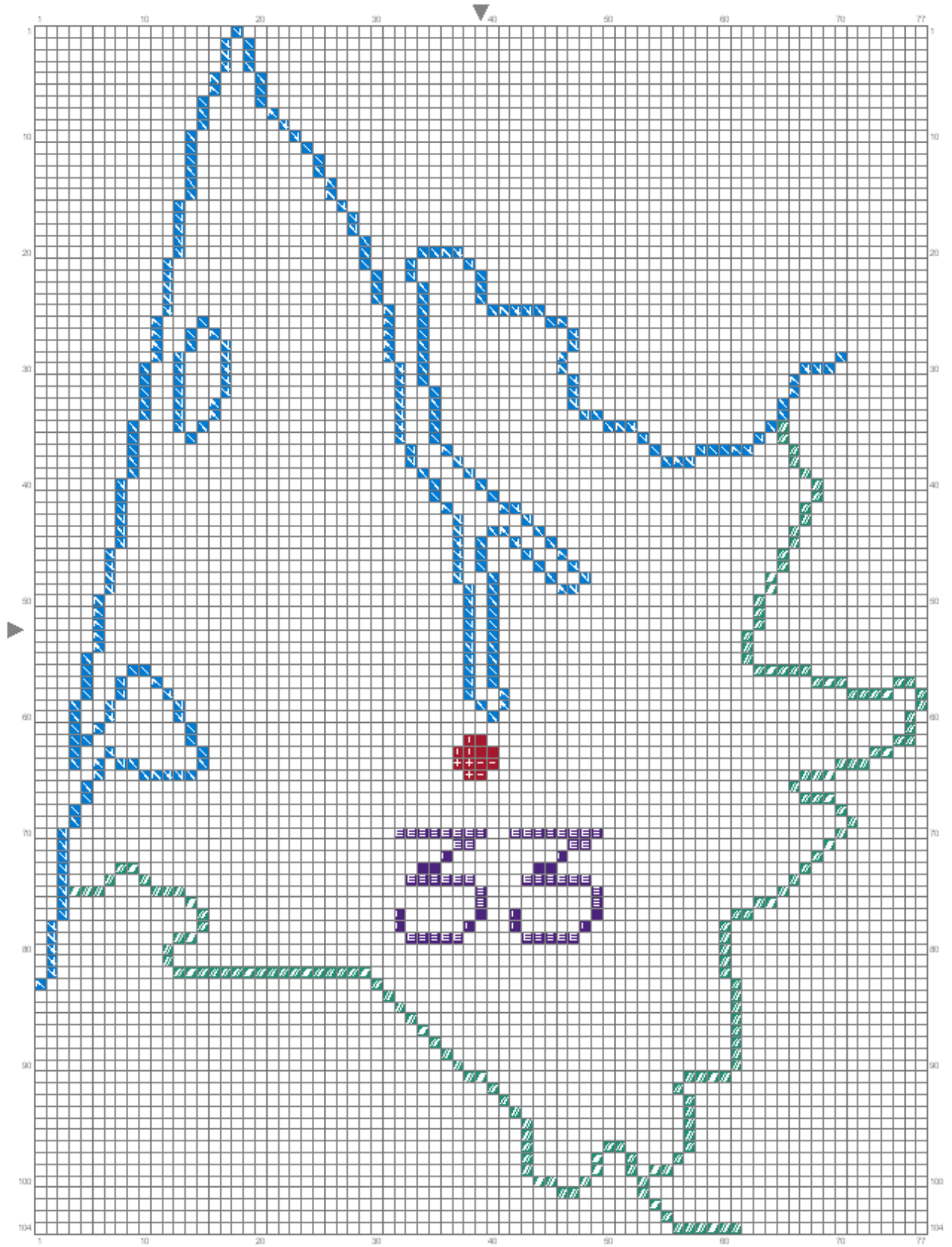


<http://cathy73broderies.canalblog.com/>

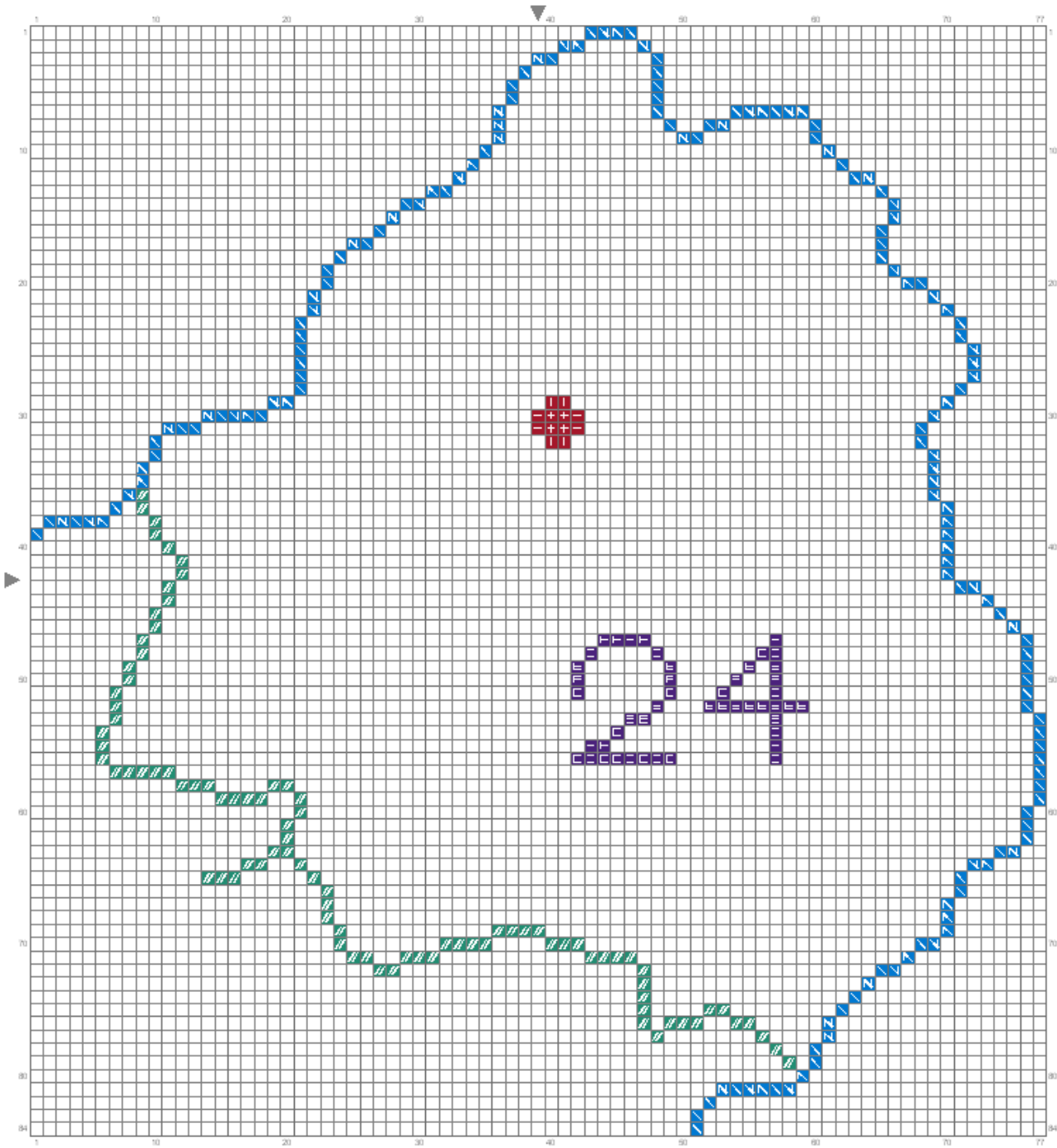
## Aquitaine



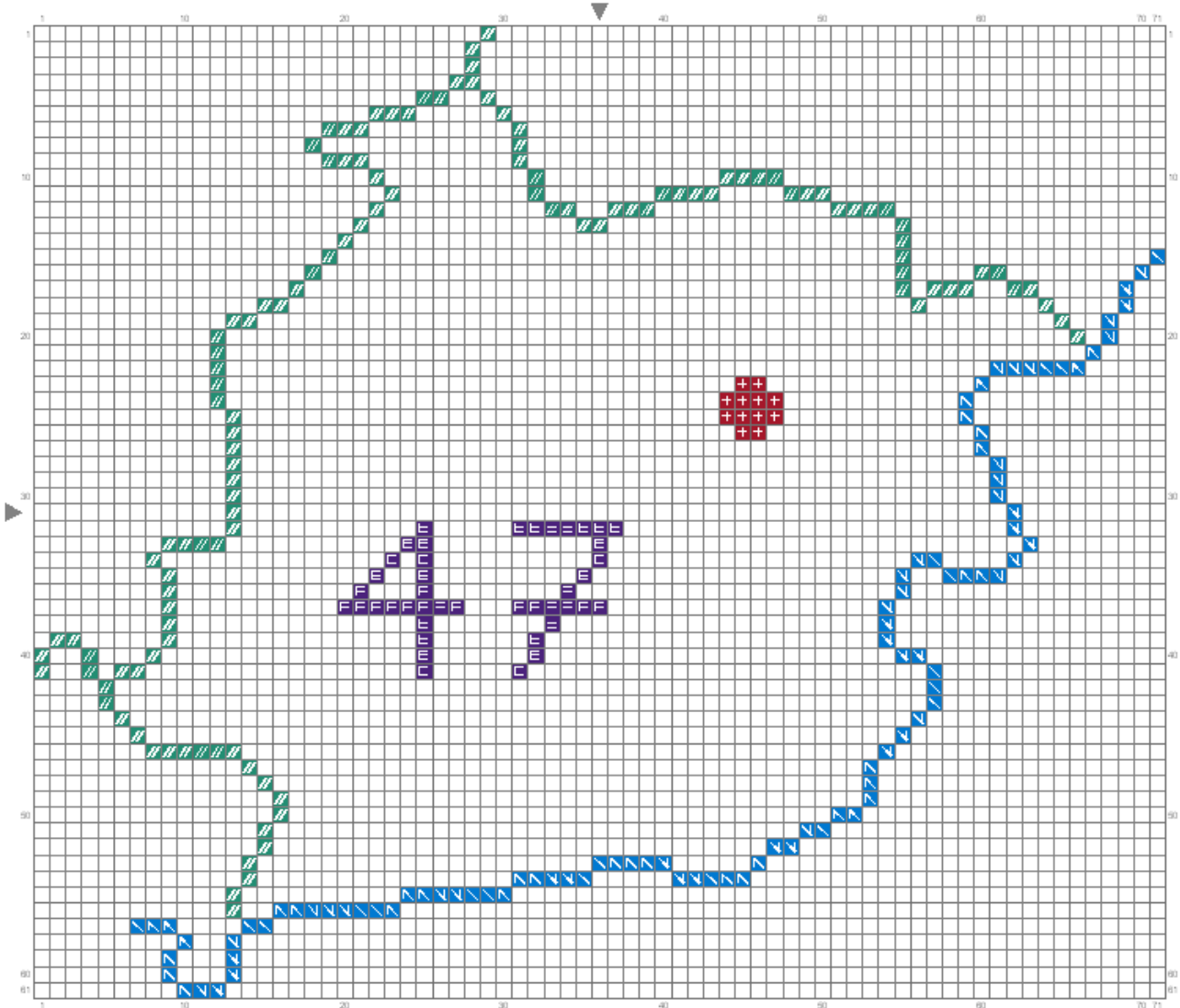
# Gironde



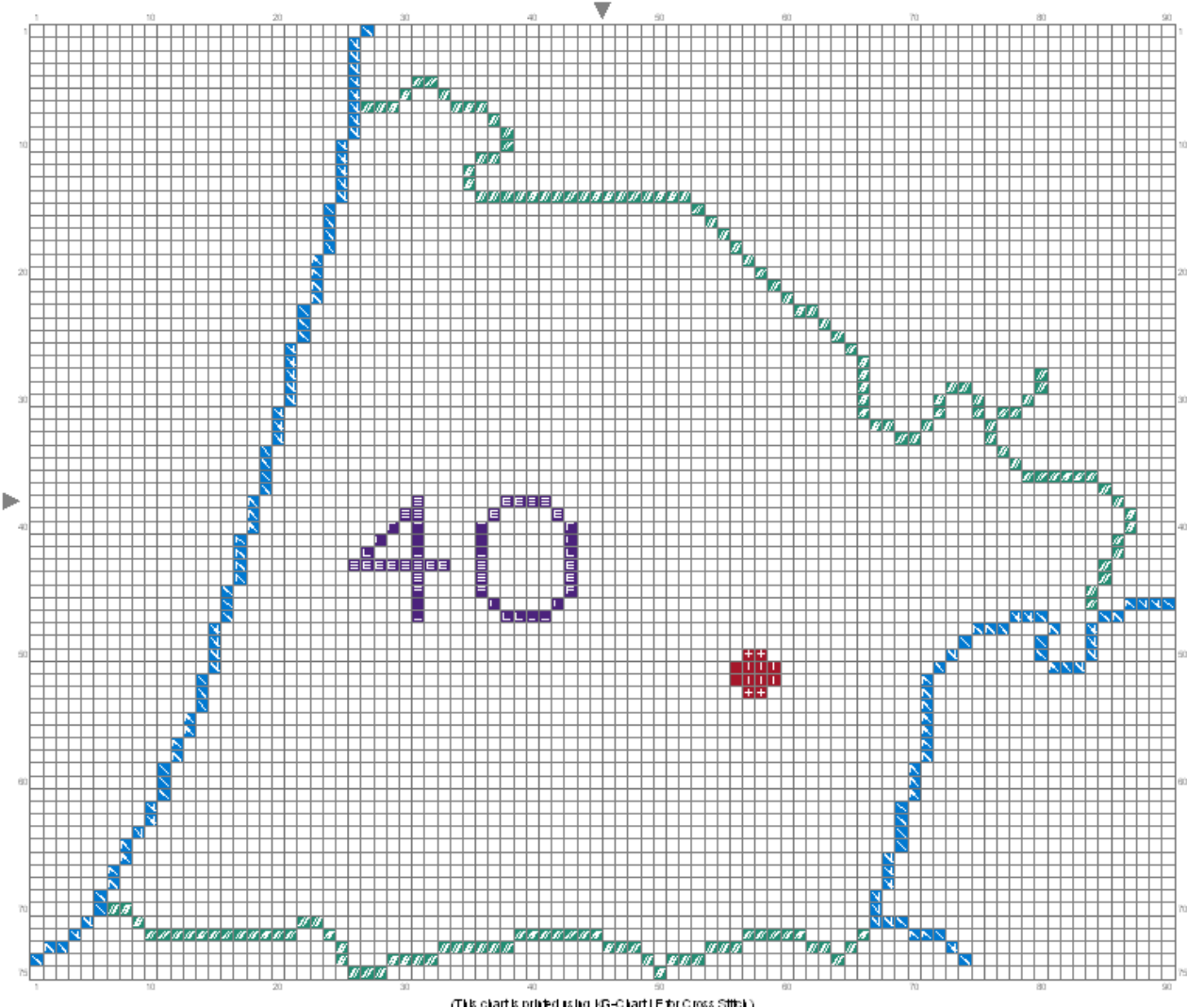
Dordogne



Lot et Garonne

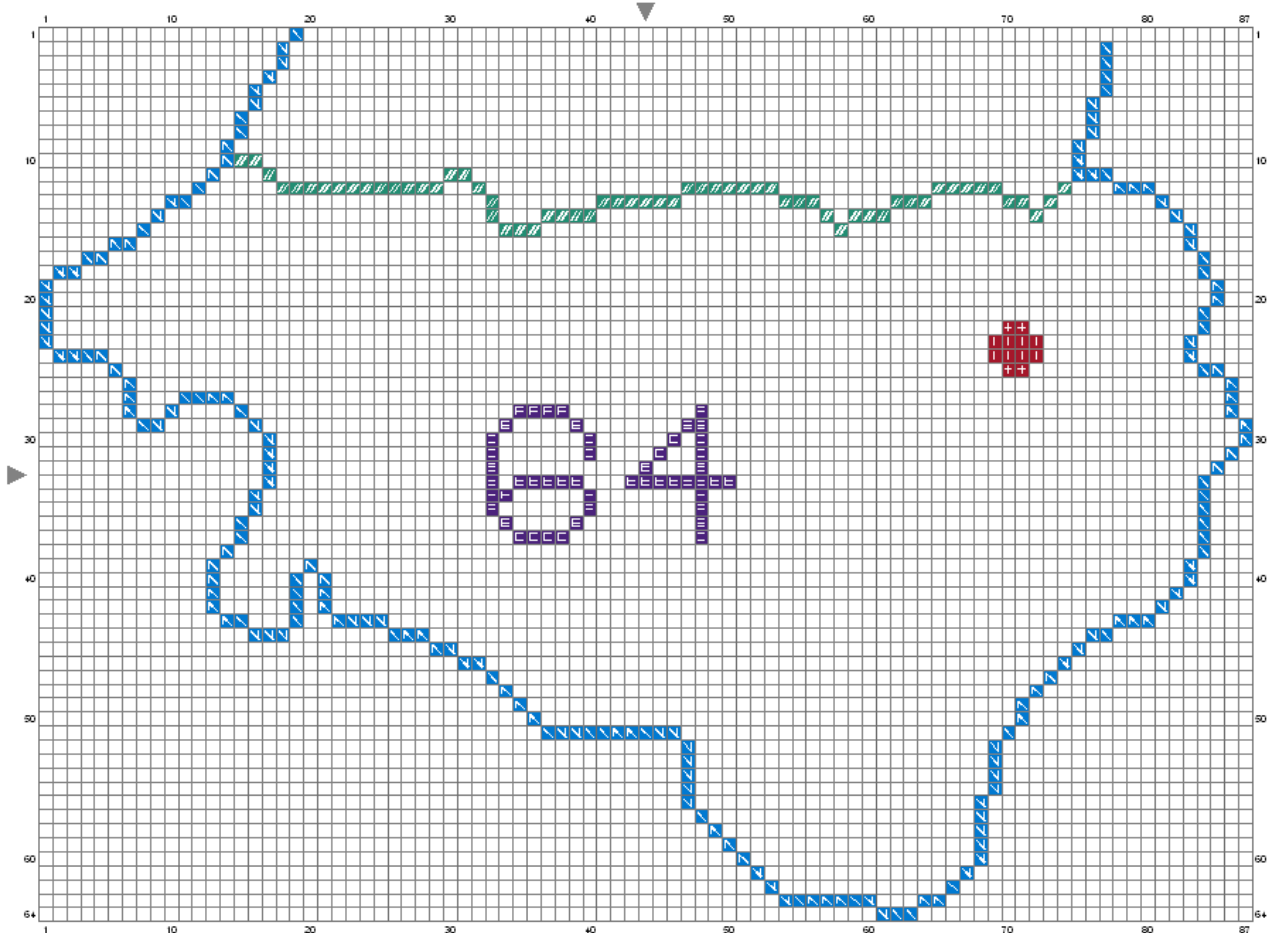


Landes



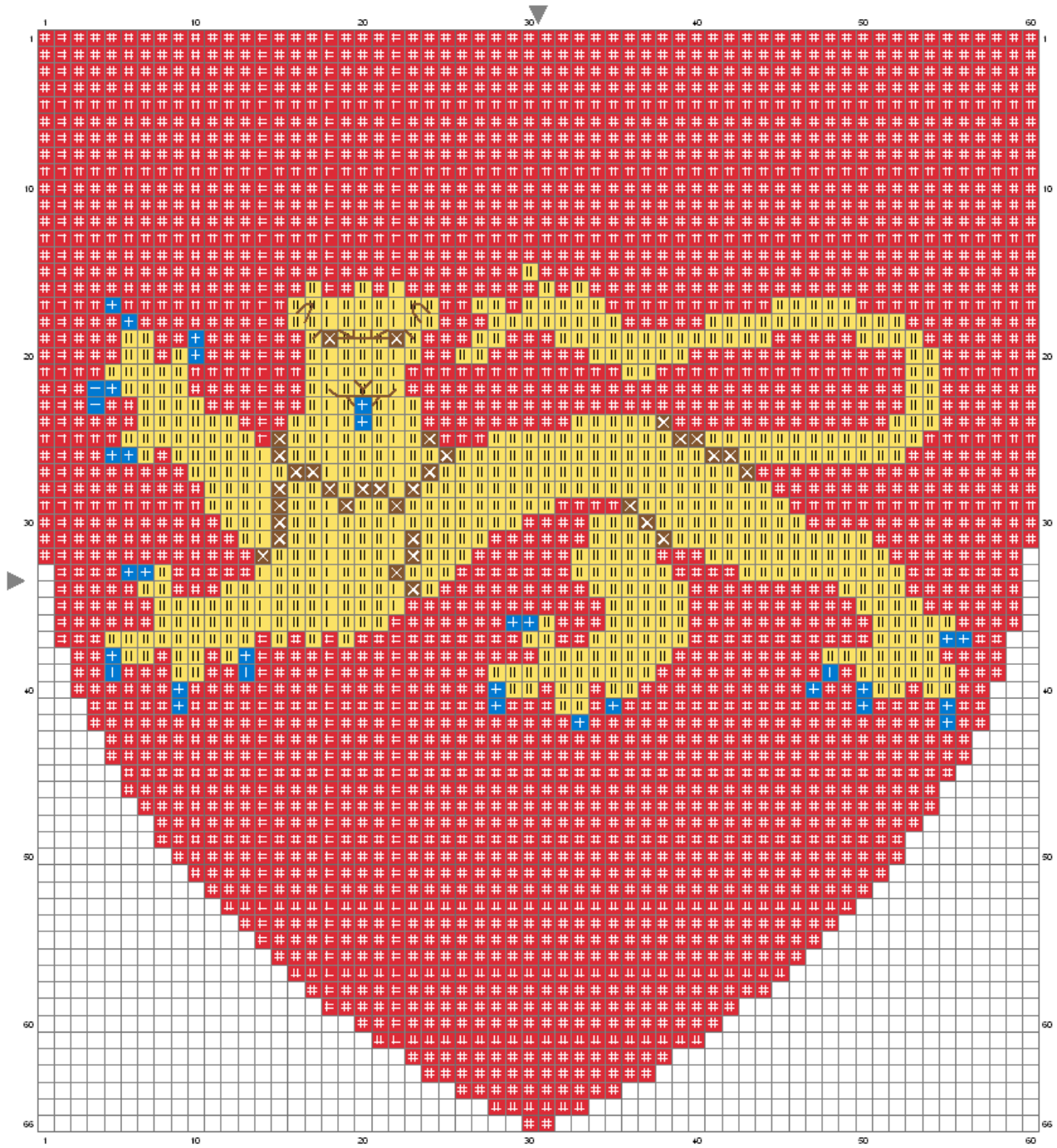
(This chart is related to the IG-Chart (F) for Cross Stitch.)

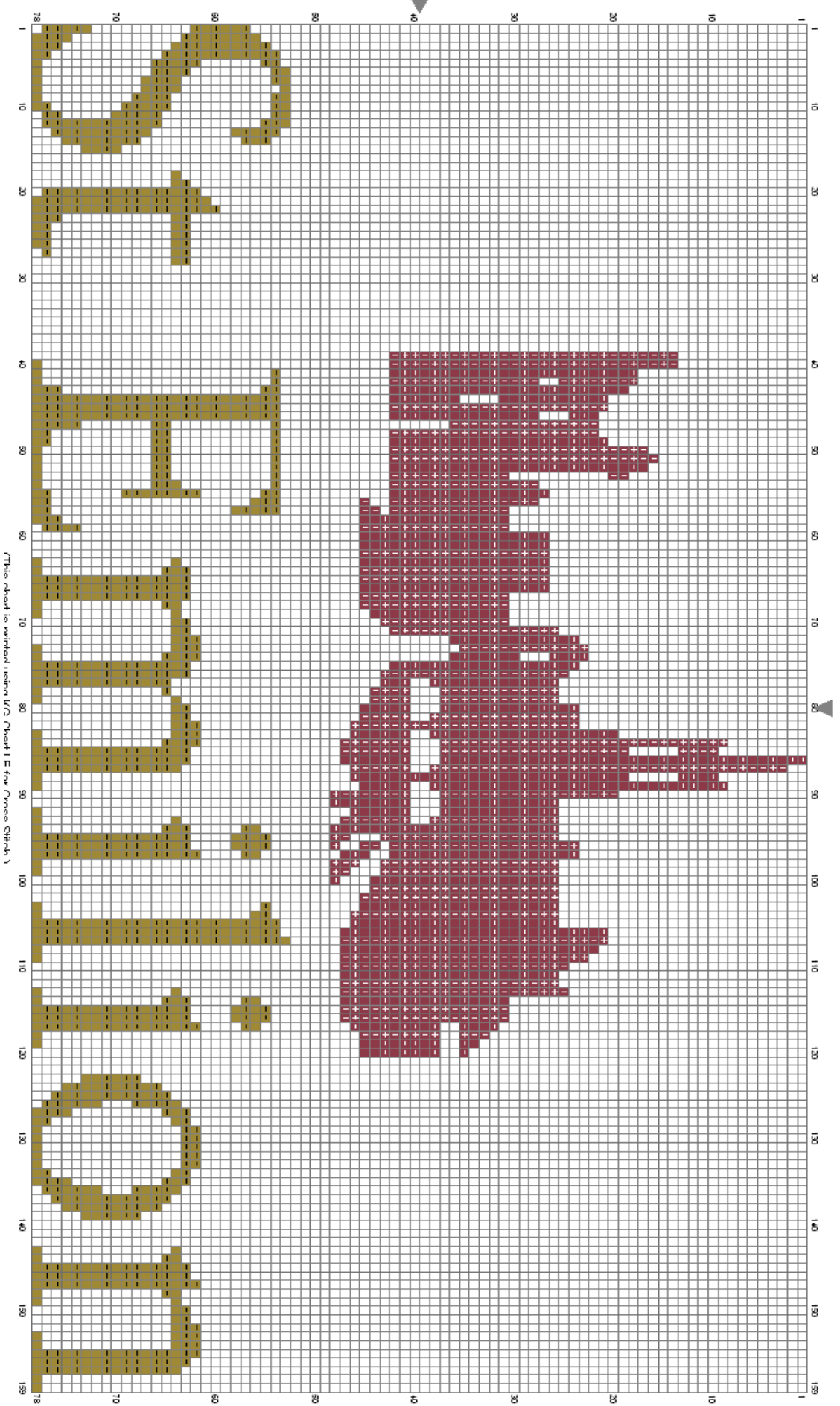
Pyrénées Atlantique



(This chart is printed using KG-Chart LE for Cross Stitch.)

# Aquitaine





(This chart is without using U2 Chart (E for Cross SHAH.)





YAPLUKA !!!!

bon courage !!  
[cathy.savoie@hotmail.fr](mailto:cathy.savoie@hotmail.fr)