

<http://cathy73broderies.canalblog.com/>

cathy73



Fleurs de frangipanier



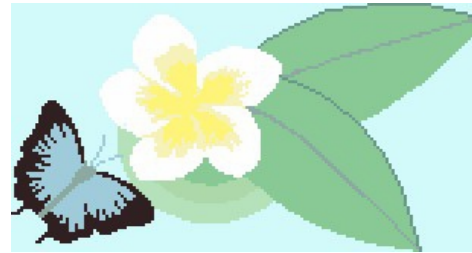
1

80x80 points



2

165x137 points



3

156x87 points

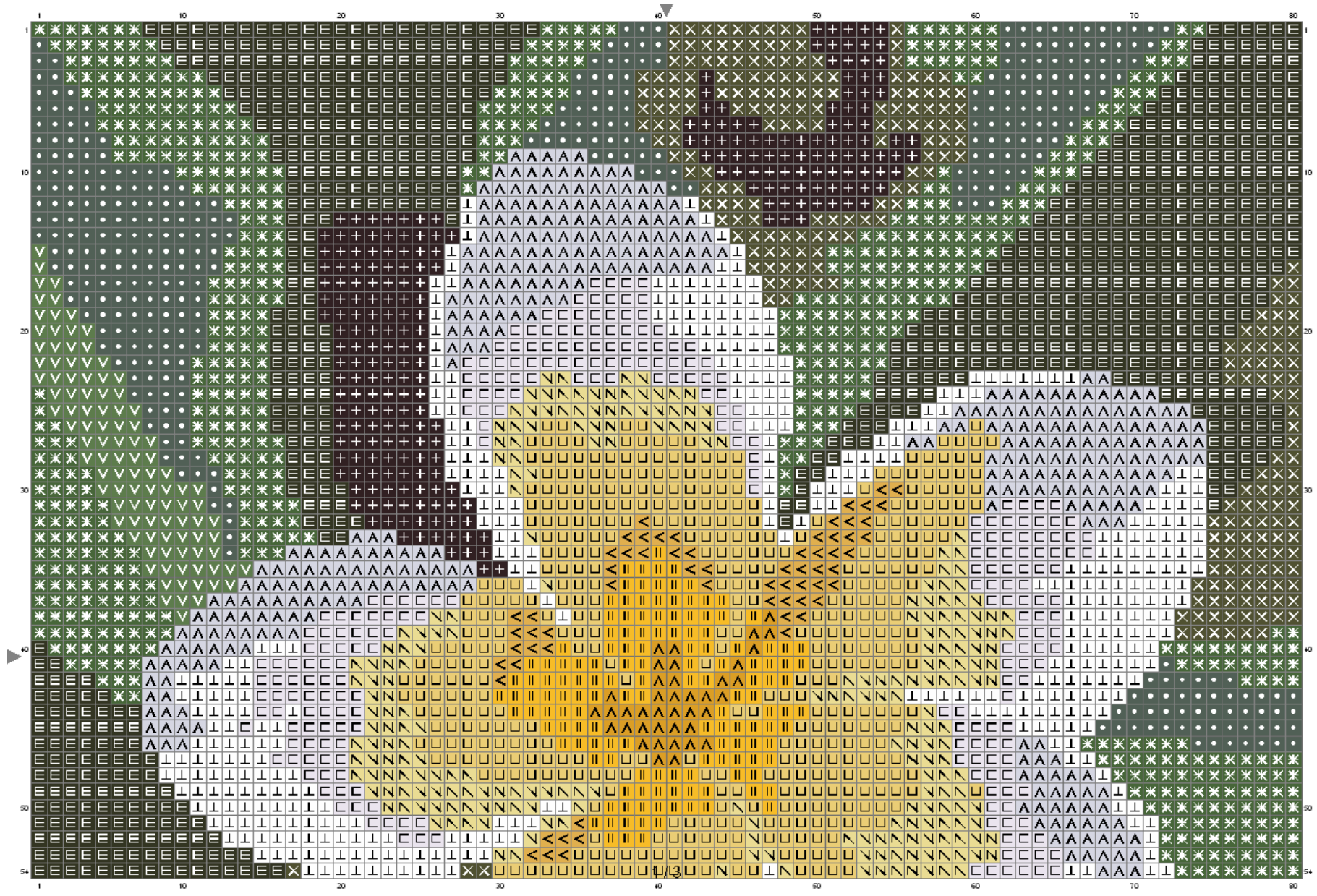
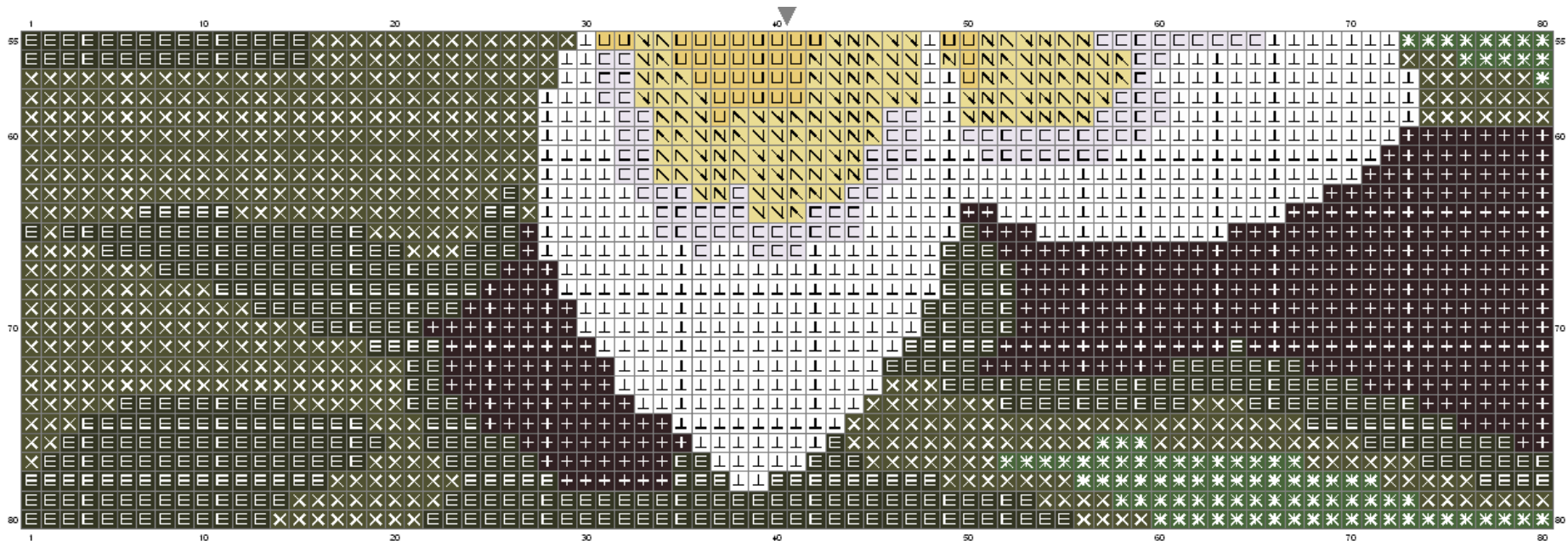


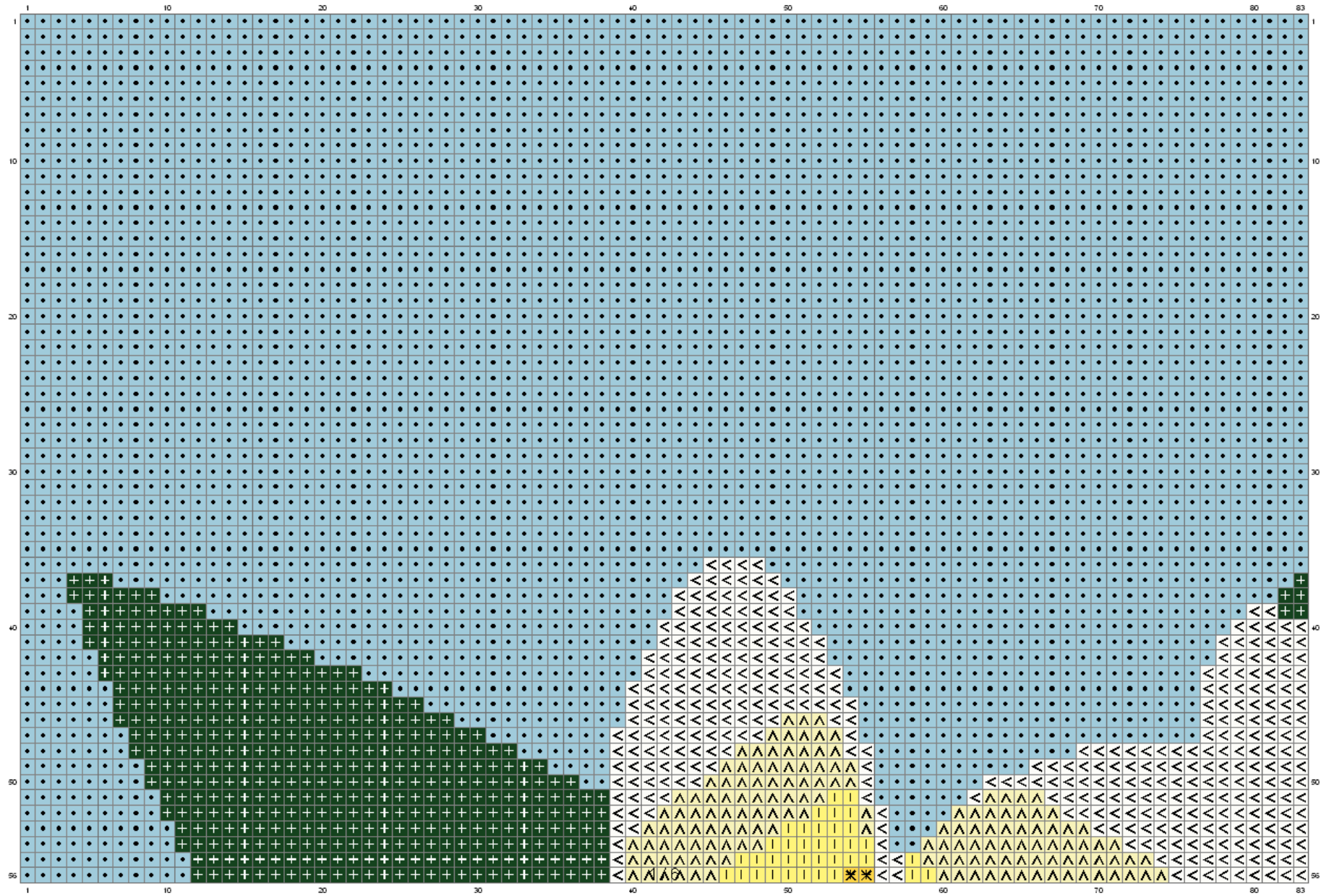
Figure 1: A large grid visualization showing a complex pattern of symbols and colors, likely representing a data matrix or a sequence of patterns.

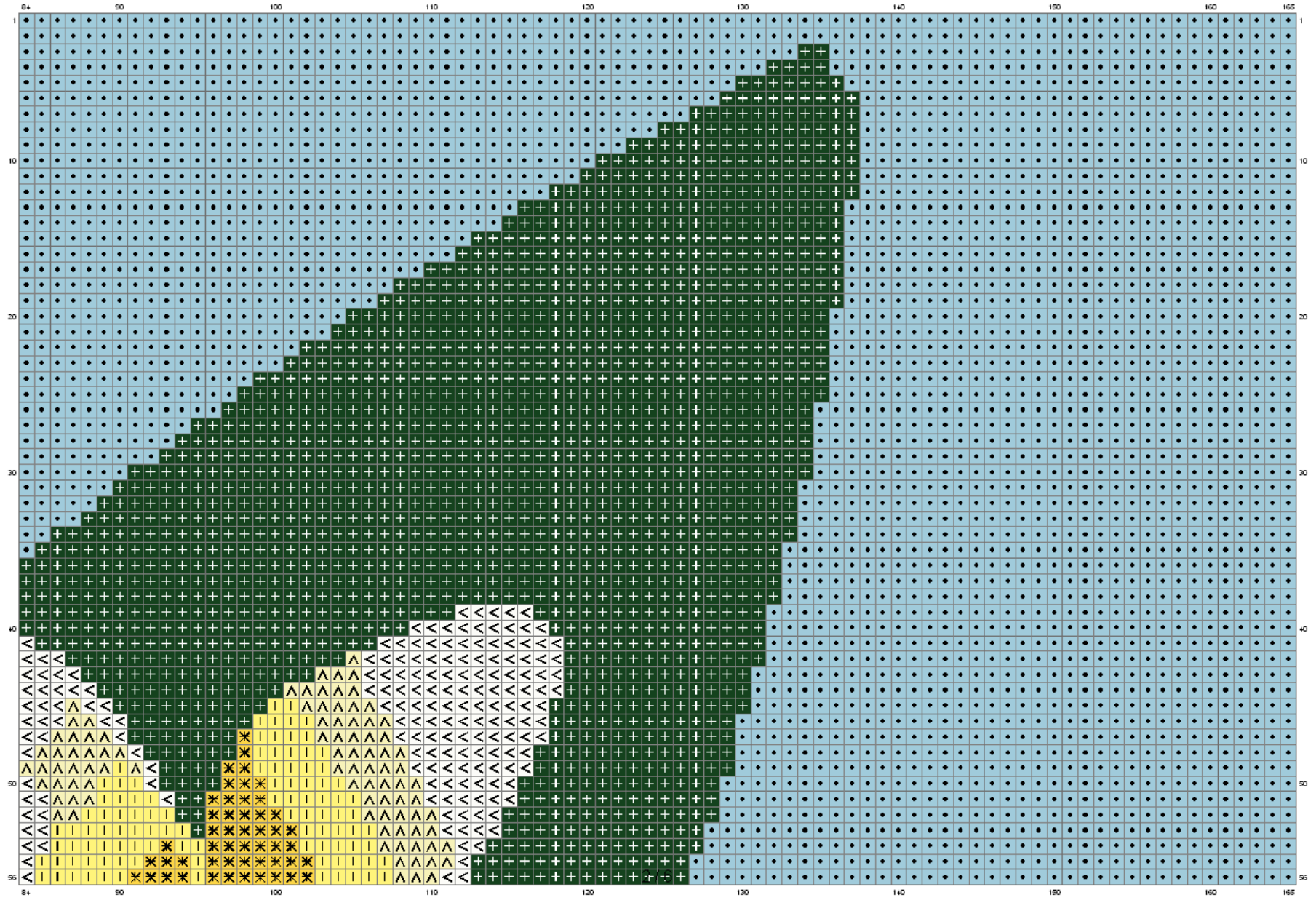


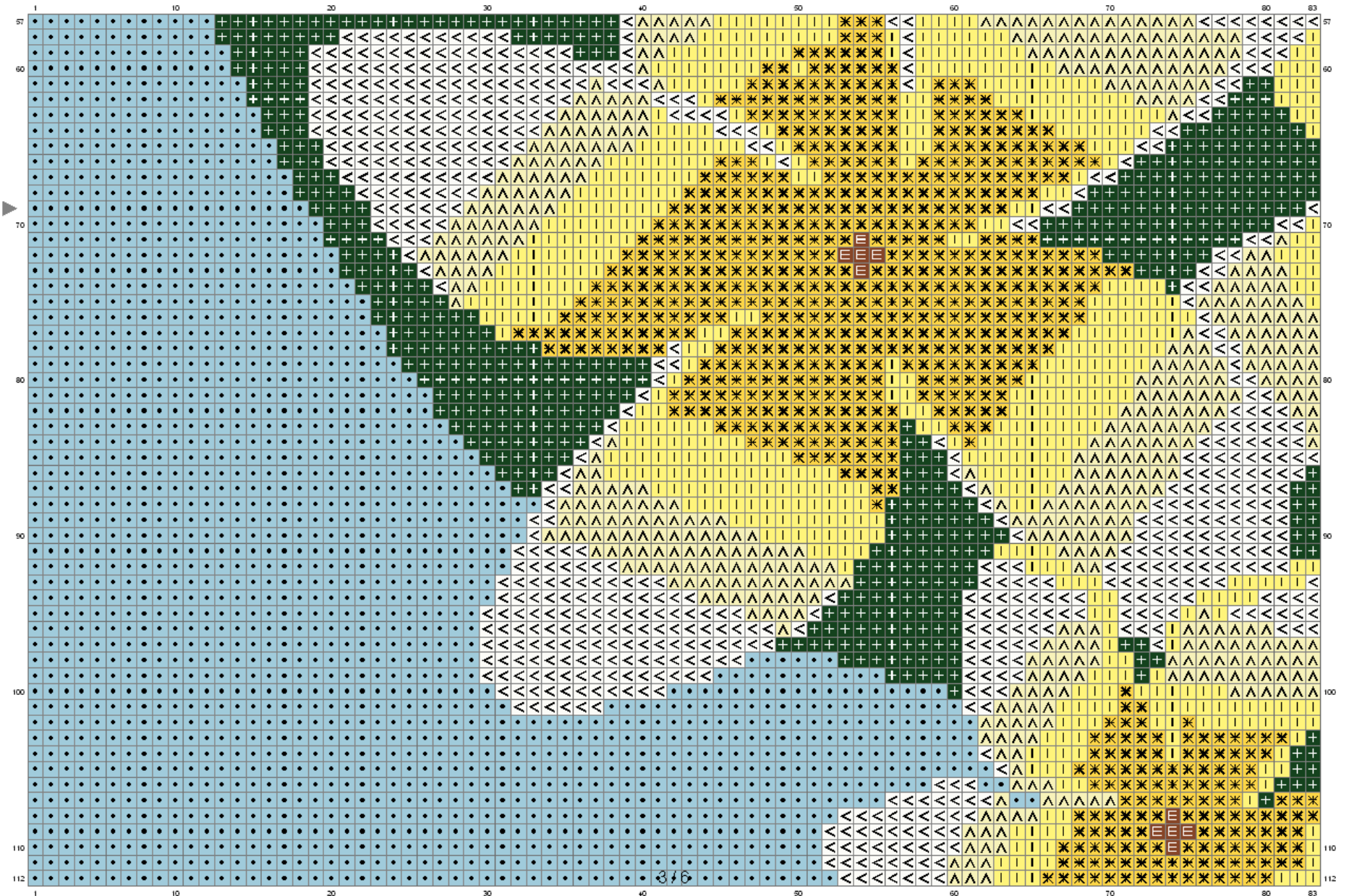
Color Table (DMC)

Cross Stitch

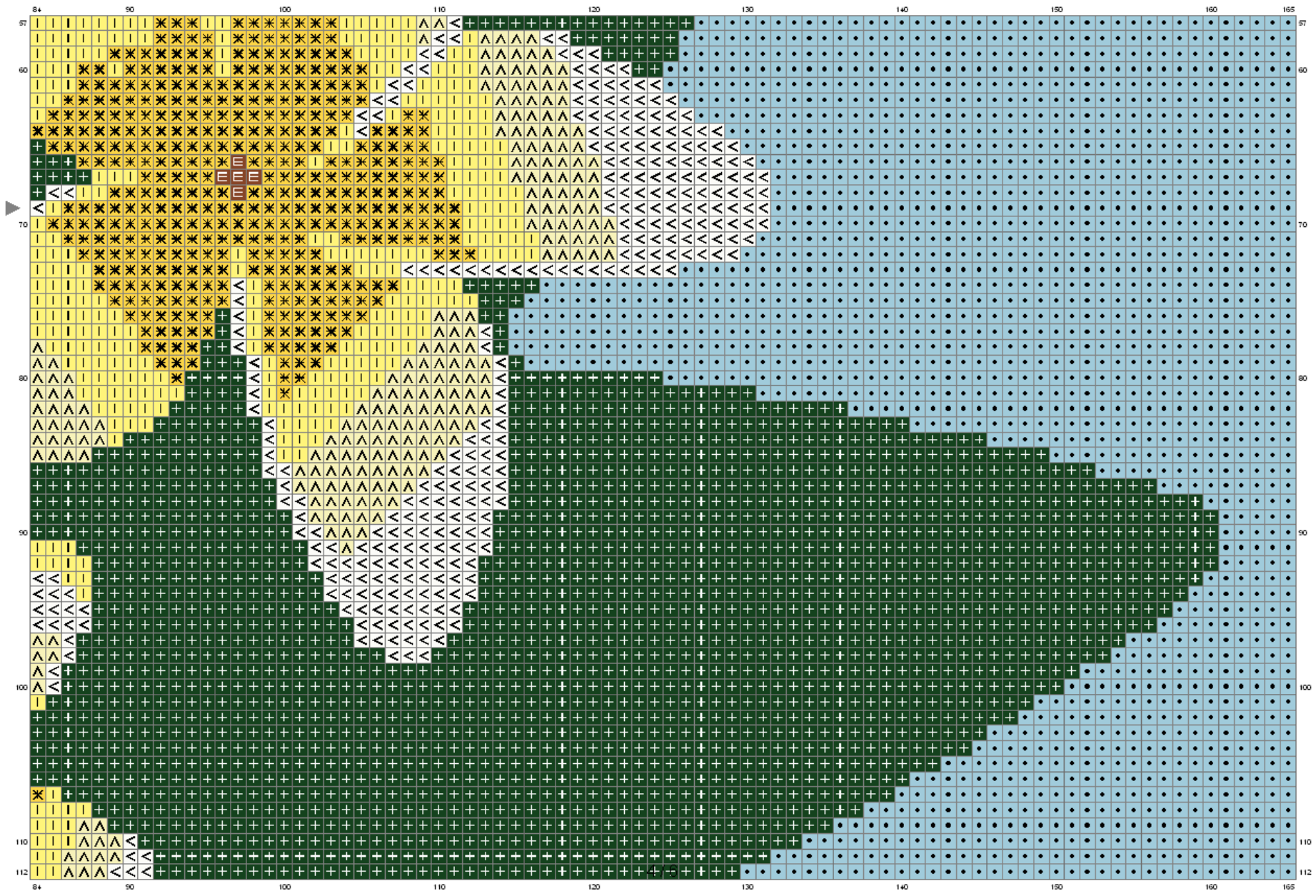
	939	(625 ct)
	934	(1219 ct)
	936	(778 ct)
	3345	(700 ct)
	520	(363 ct)
	987	(106 ct)
	3852	(40 ct)
	972	(146 ct)
	3820	(65 ct)
	3822	(477 ct)
	165	(368 ct)
	415	(370 ct)
	762	(352 ct)
	B5200	(791 ct)

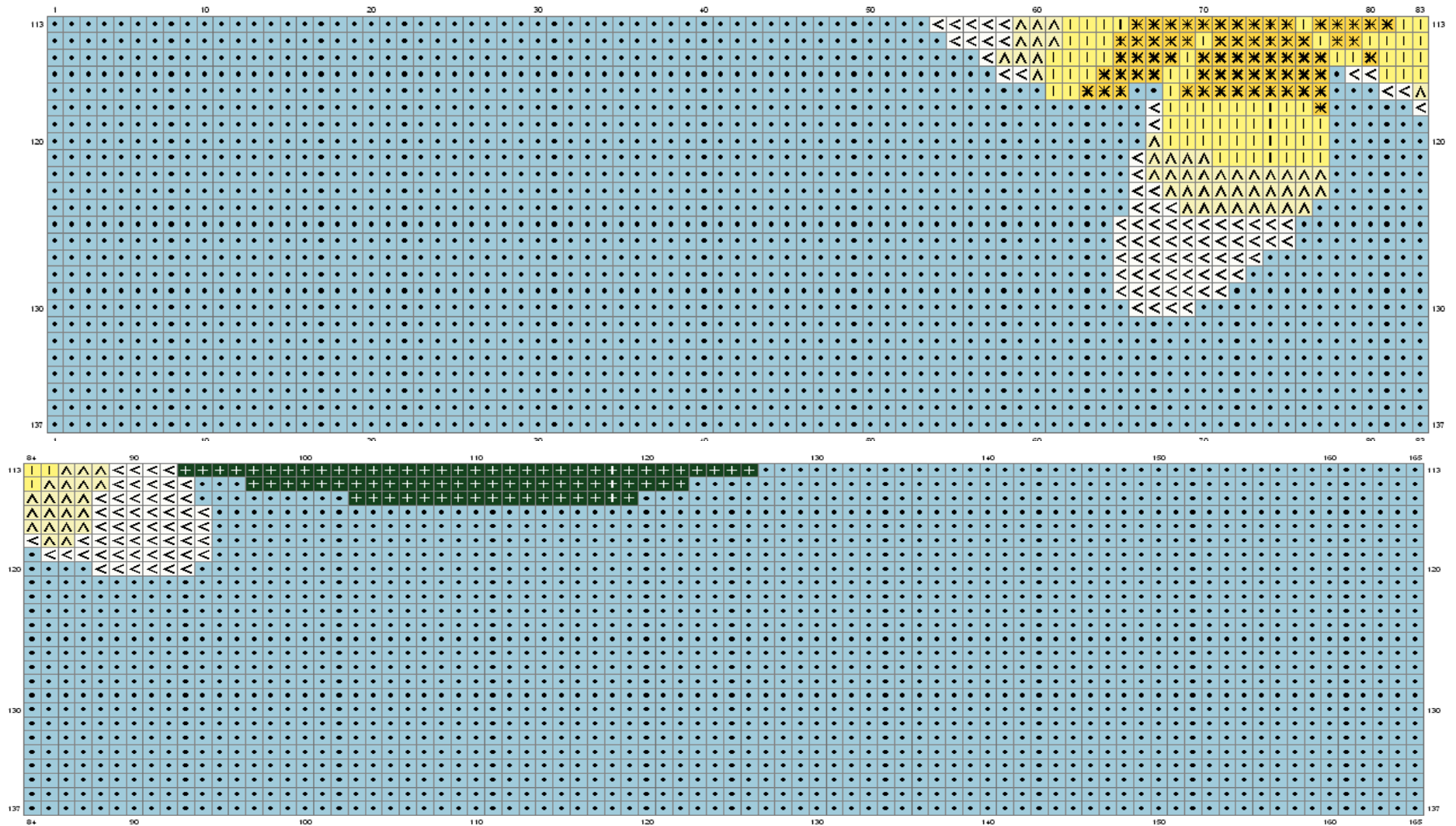






(This chart is printed using KQ Chart LE for Cross Stitch.)












(This chart is printed using KG-Chart LE for Cross Stitch.)

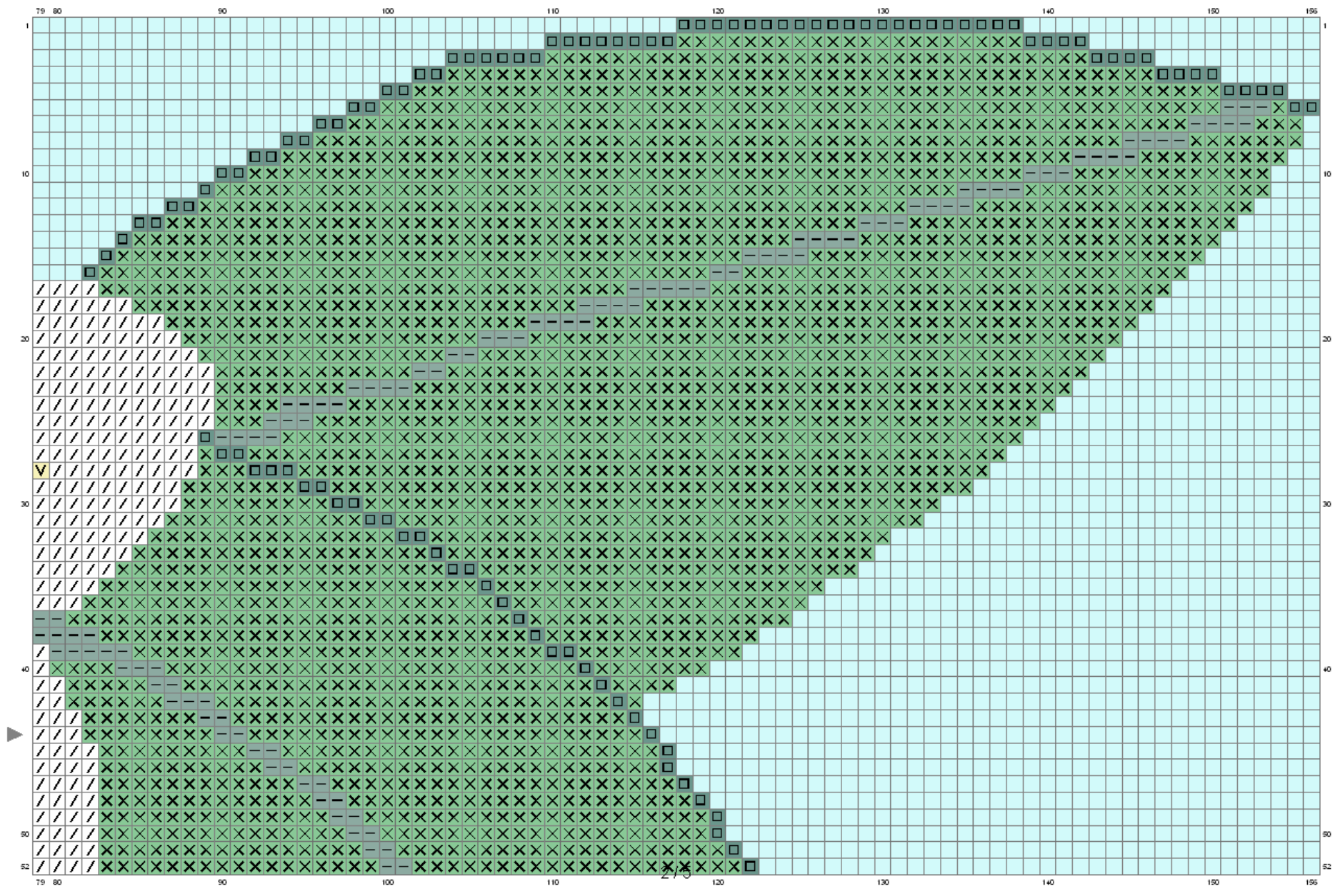
Stitch Count: 165w x 137h // Cloth: Aida Cloth's Color: White

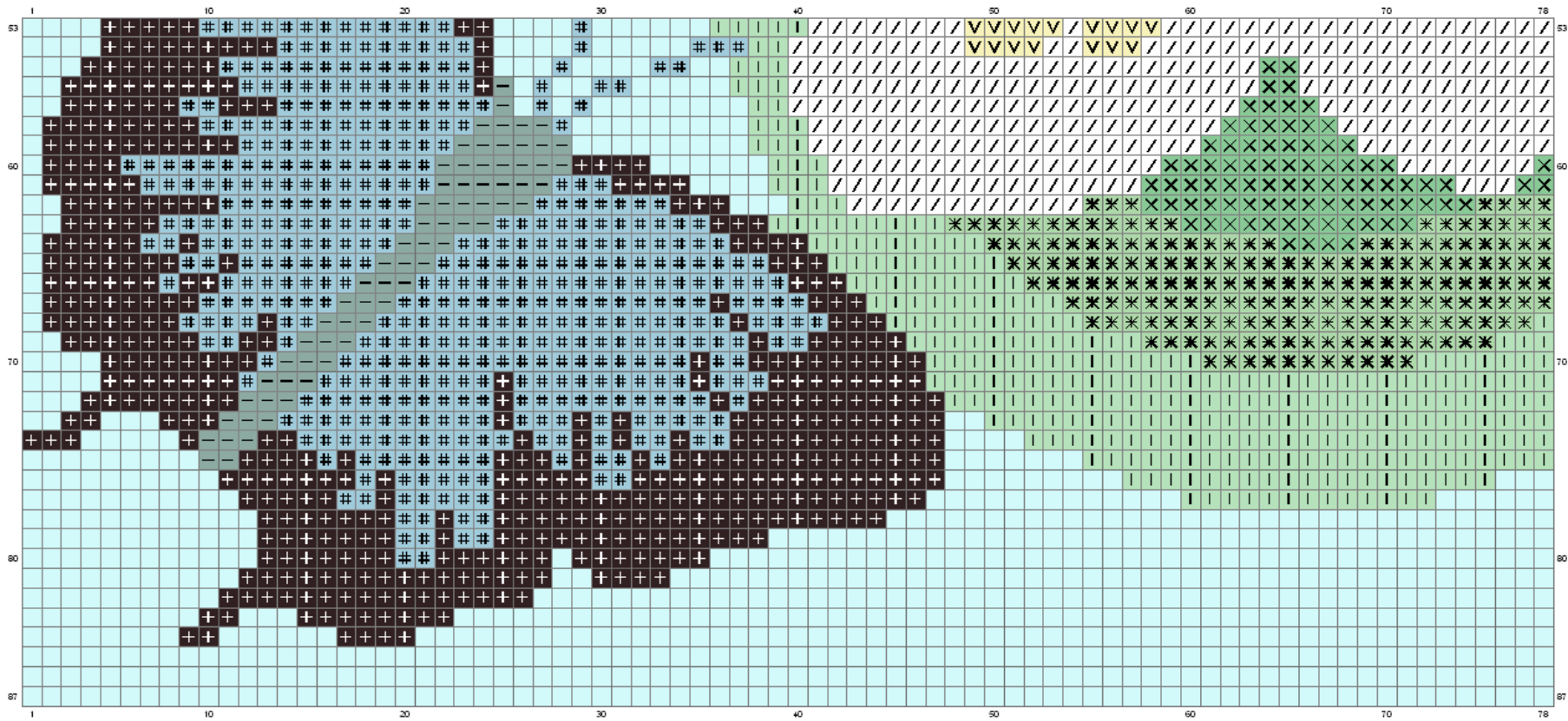
Finished Size: 60 cm x 49.81 cm (5.5 linen thread/cm) // Total 7 Colors

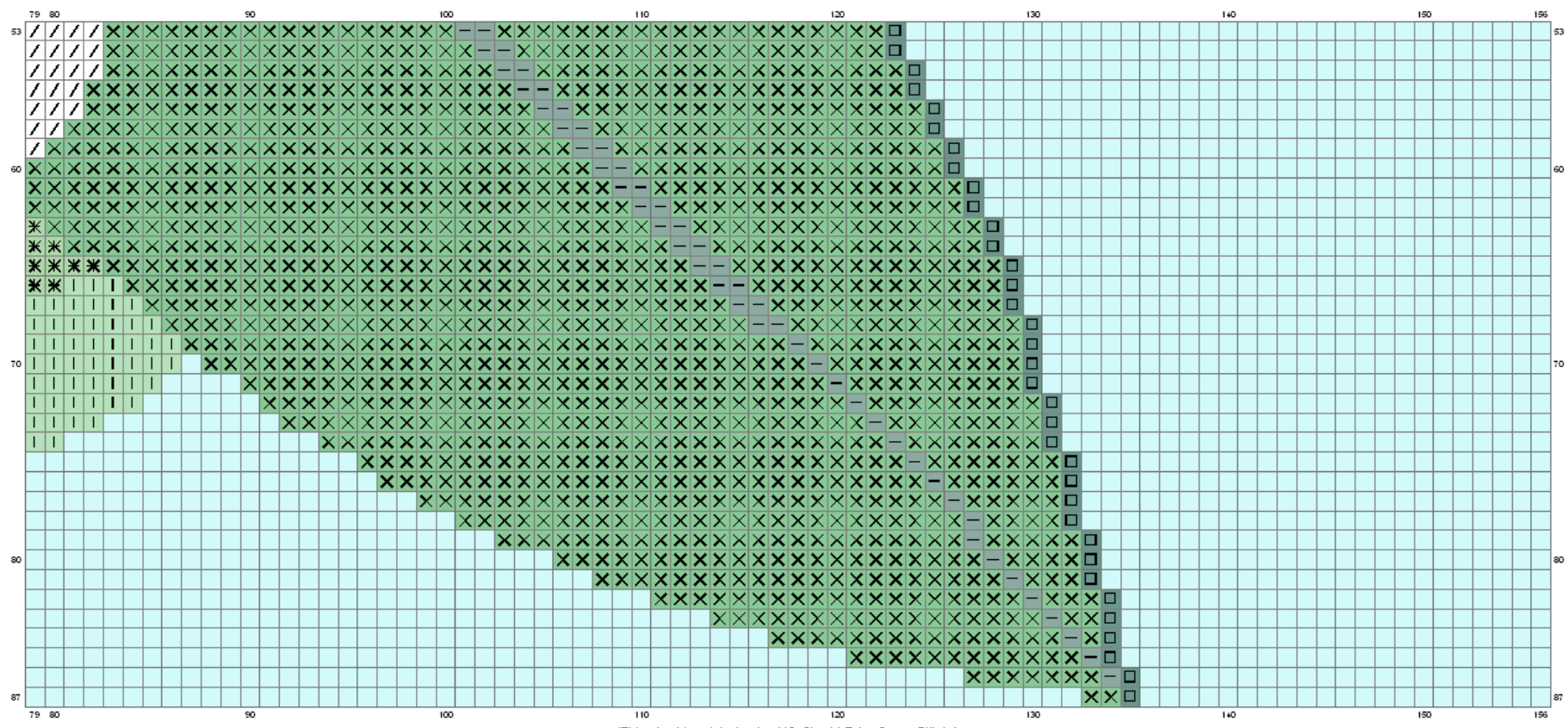
Color Table (DMC)

Cross Stitch

-  890 (4253 ct)
-  444 (1239 ct)
-  307 (1070 ct)
-  519 (13360 ct)
-  3078 (1037 ct)
-  BLANC (1631 ct)
-  300 (15 ct)







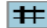









Color Table (DMC)

Cross Stitch

	939	(618 ct)
	502	(146 ct)
	503	(234 ct)
	954	(3599 ct)
	966	(192 ct)
	955	(395 ct)
	519	(561 ct)
	307	(454 ct)
	3078	(423 ct)
	B5200	(1350 ct)

Bon courage !!

cathy.savoie@hotmail.fr