

<http://cathy73broderies.canalblog.com/>

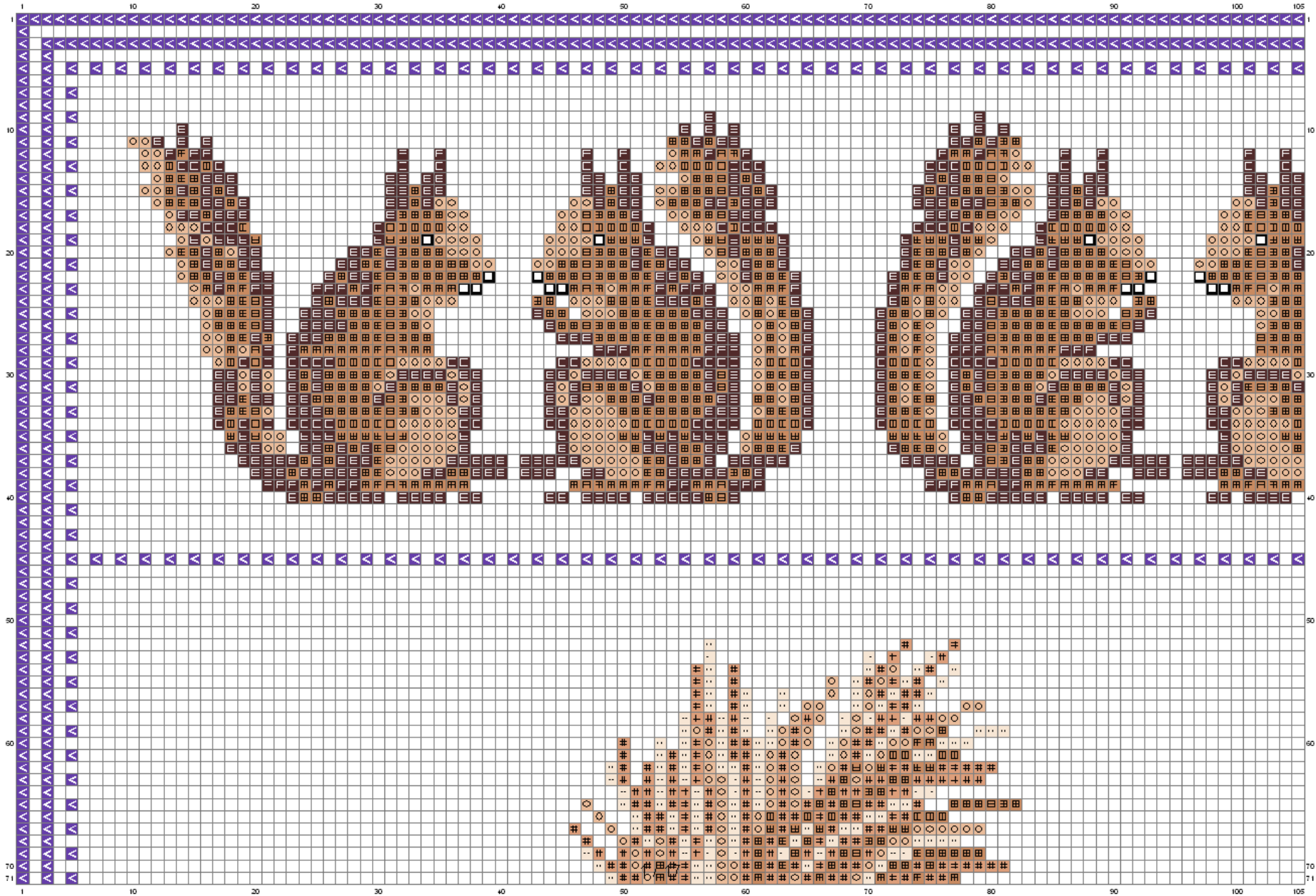
cathy73

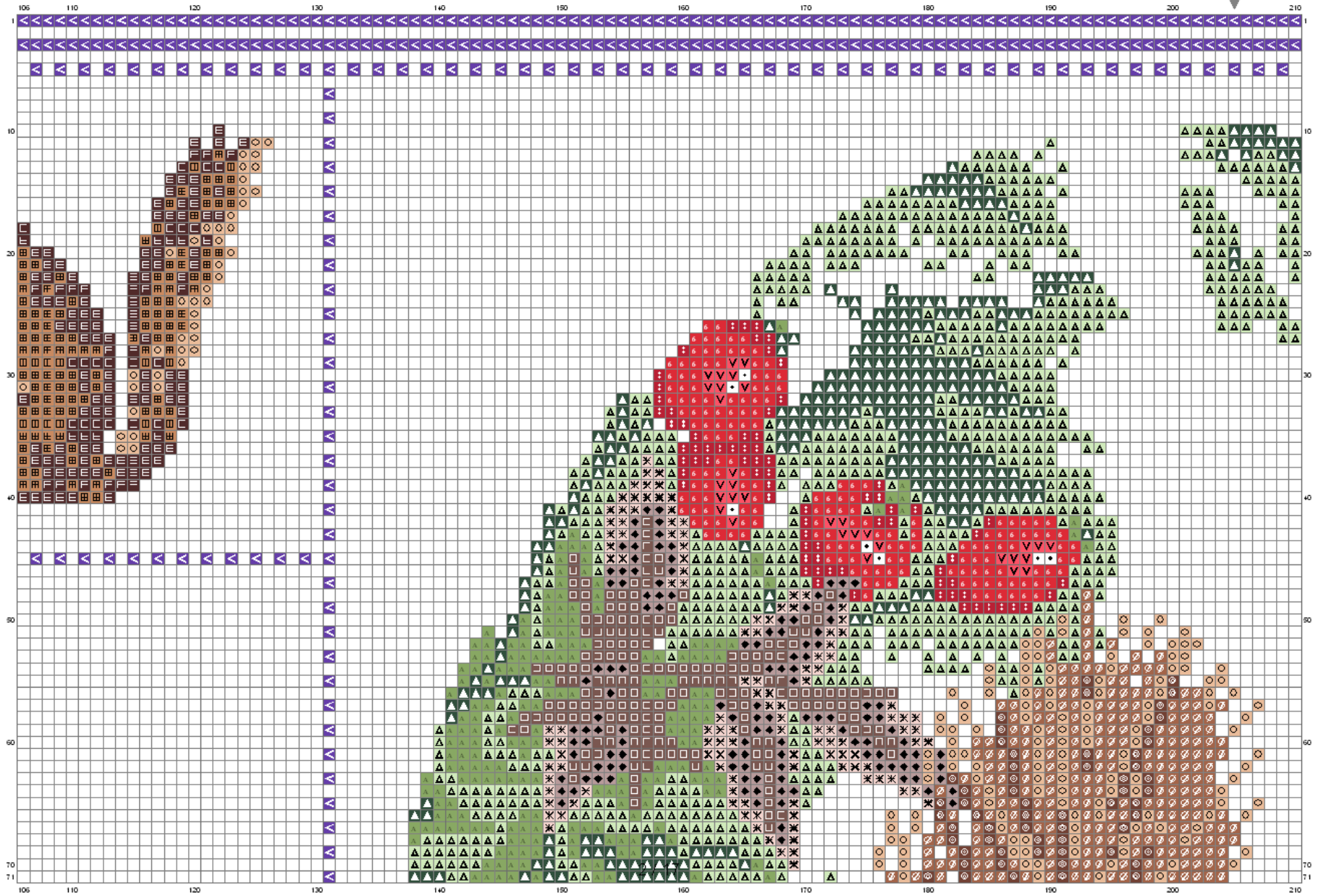


# Écureuils

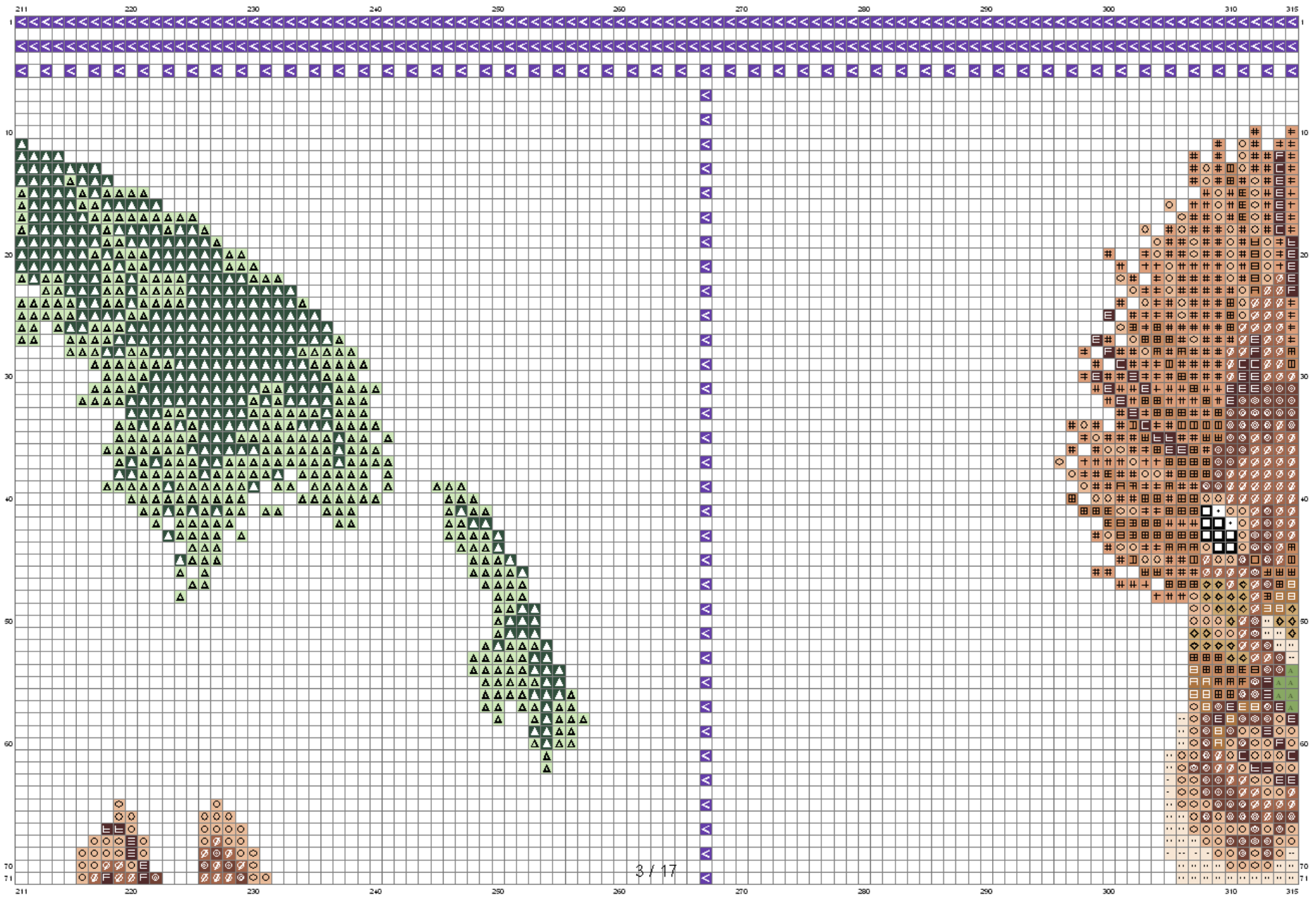


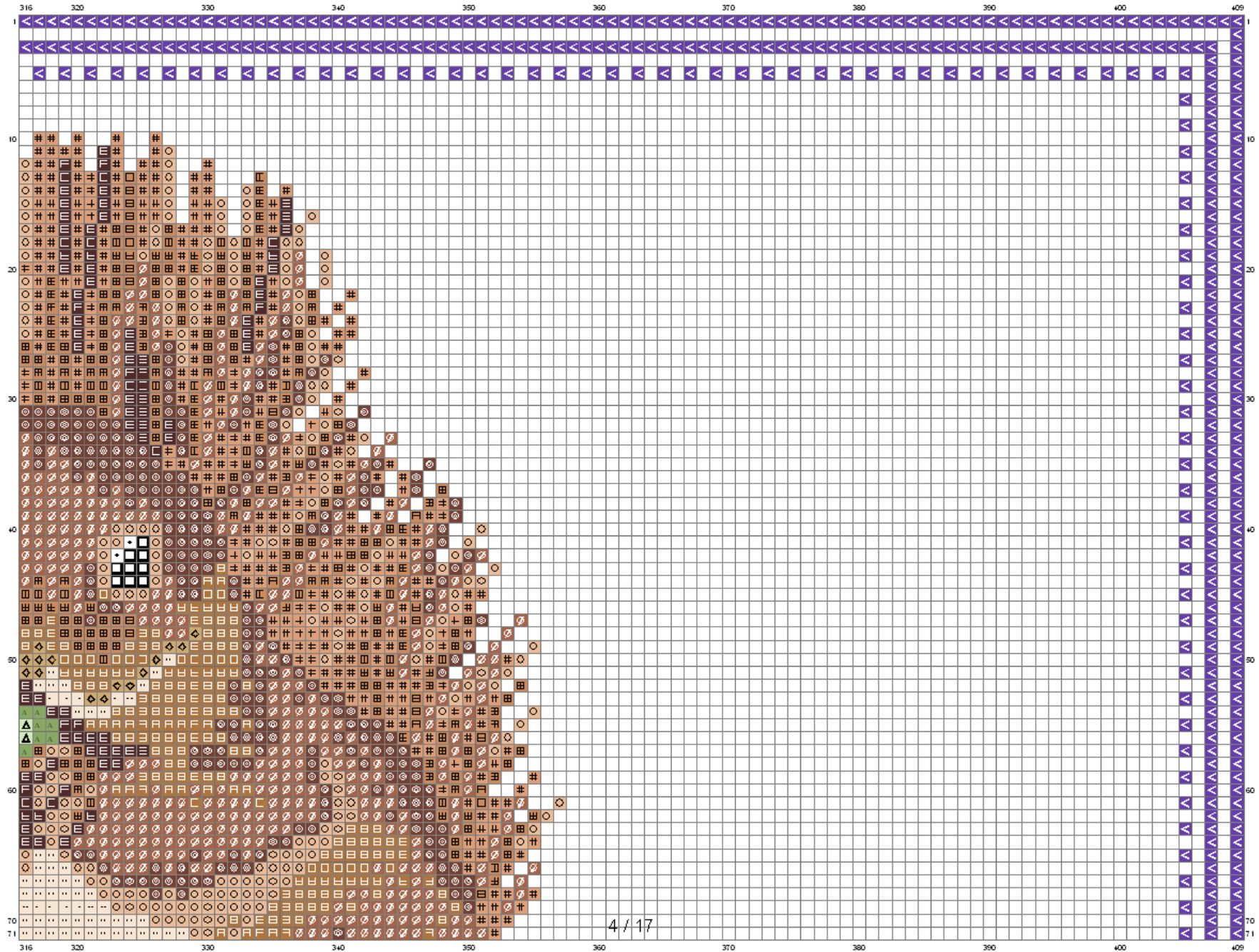
409x249 points

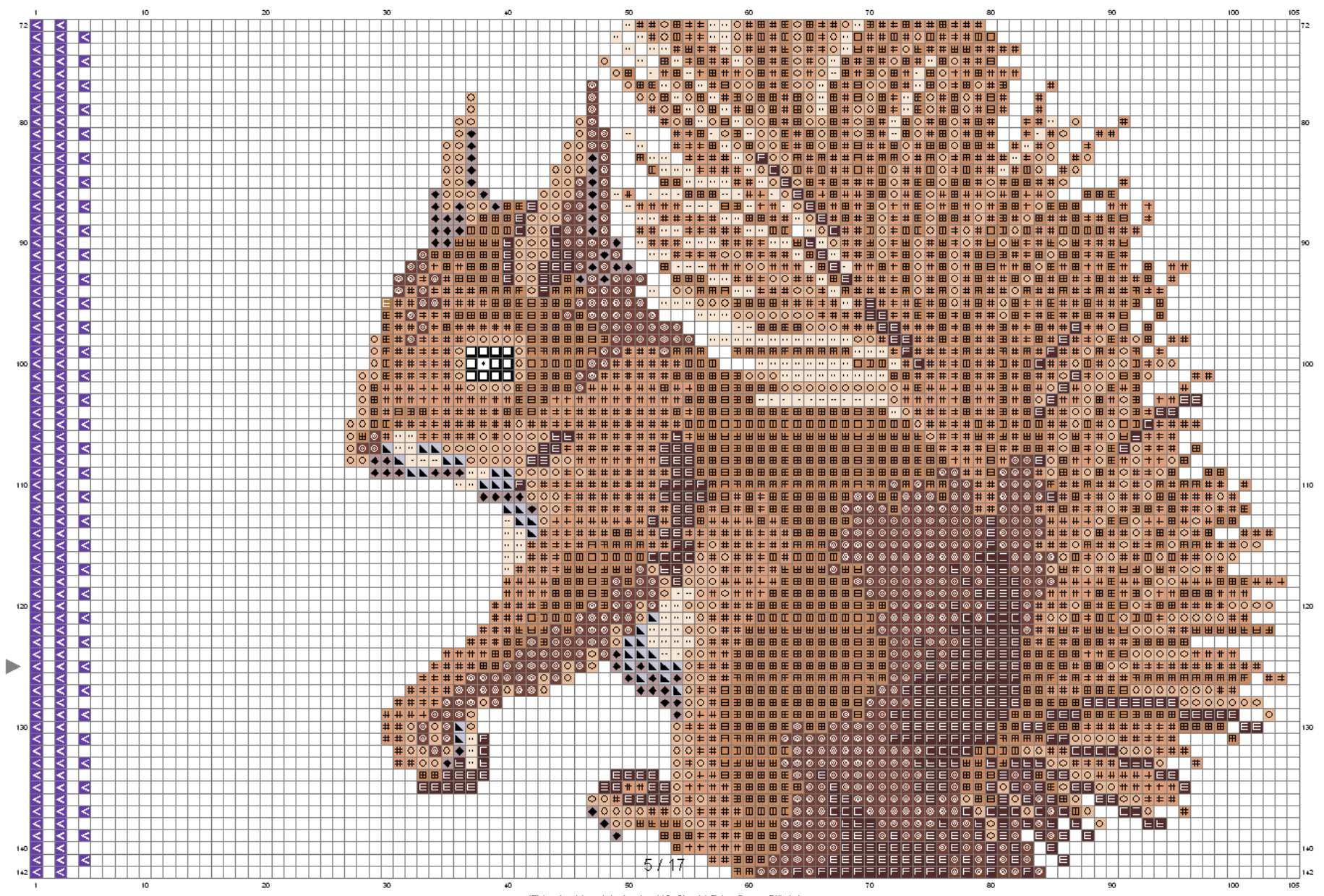








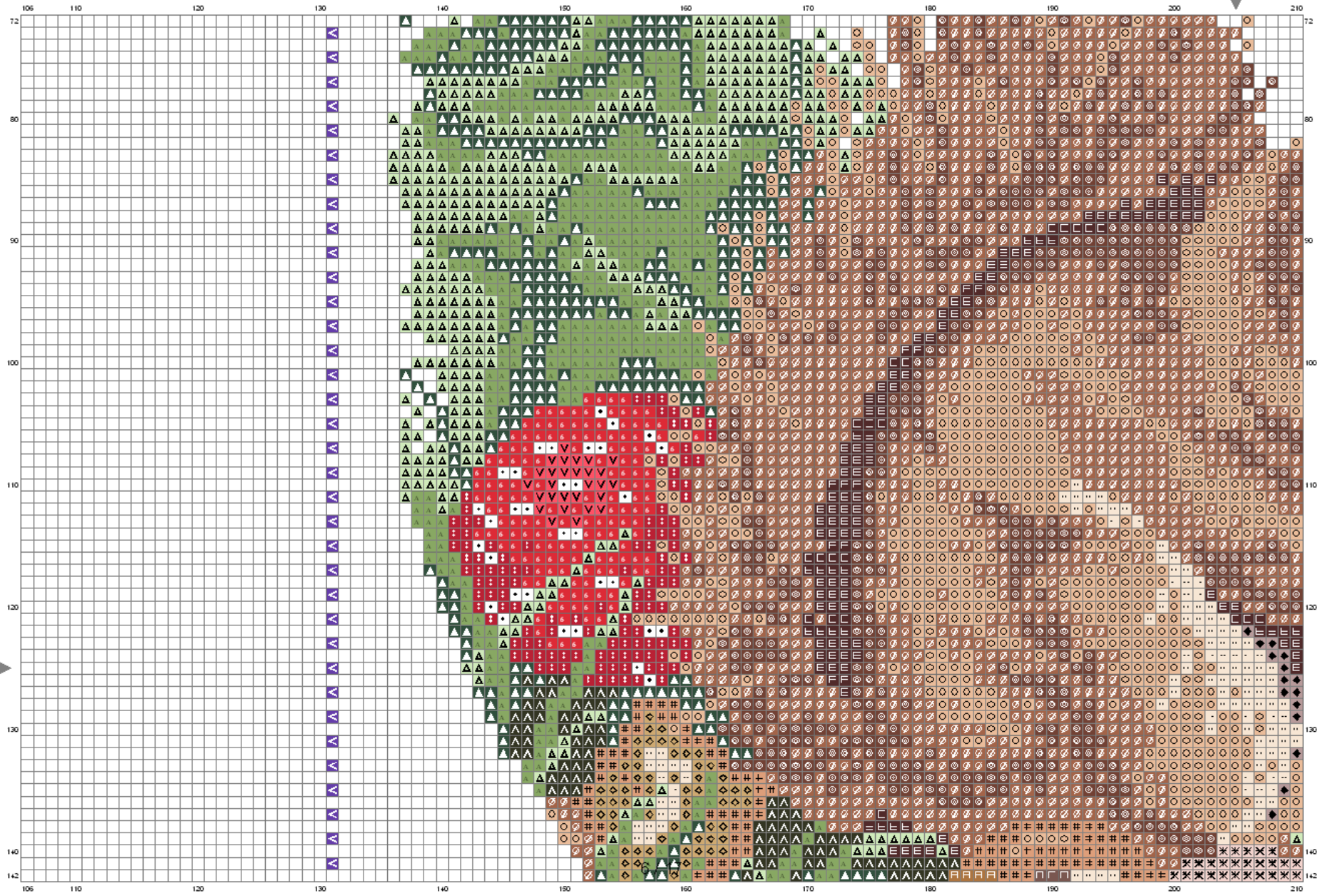


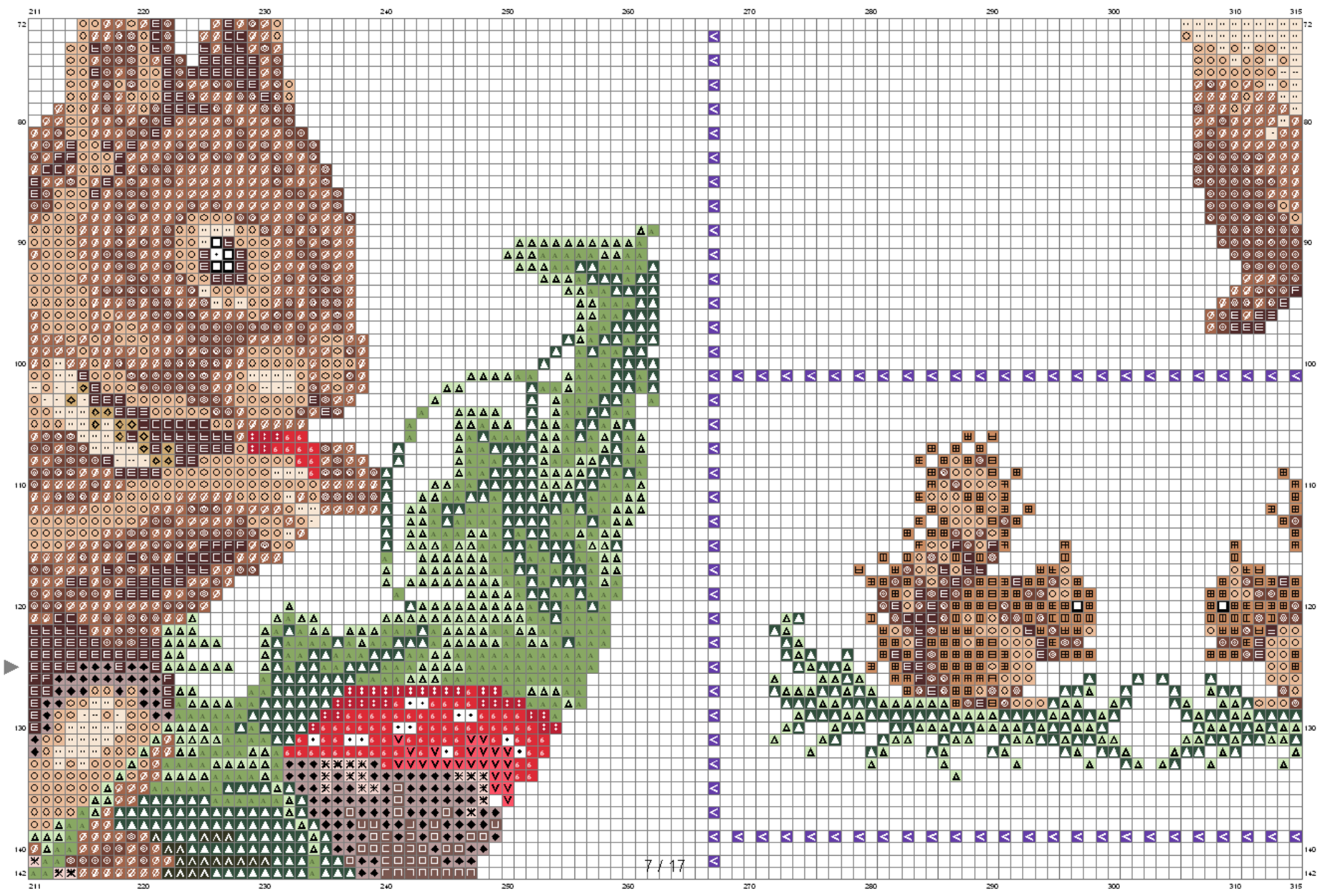


(This chart is printed using KC Chart LE for Cross Stitch)



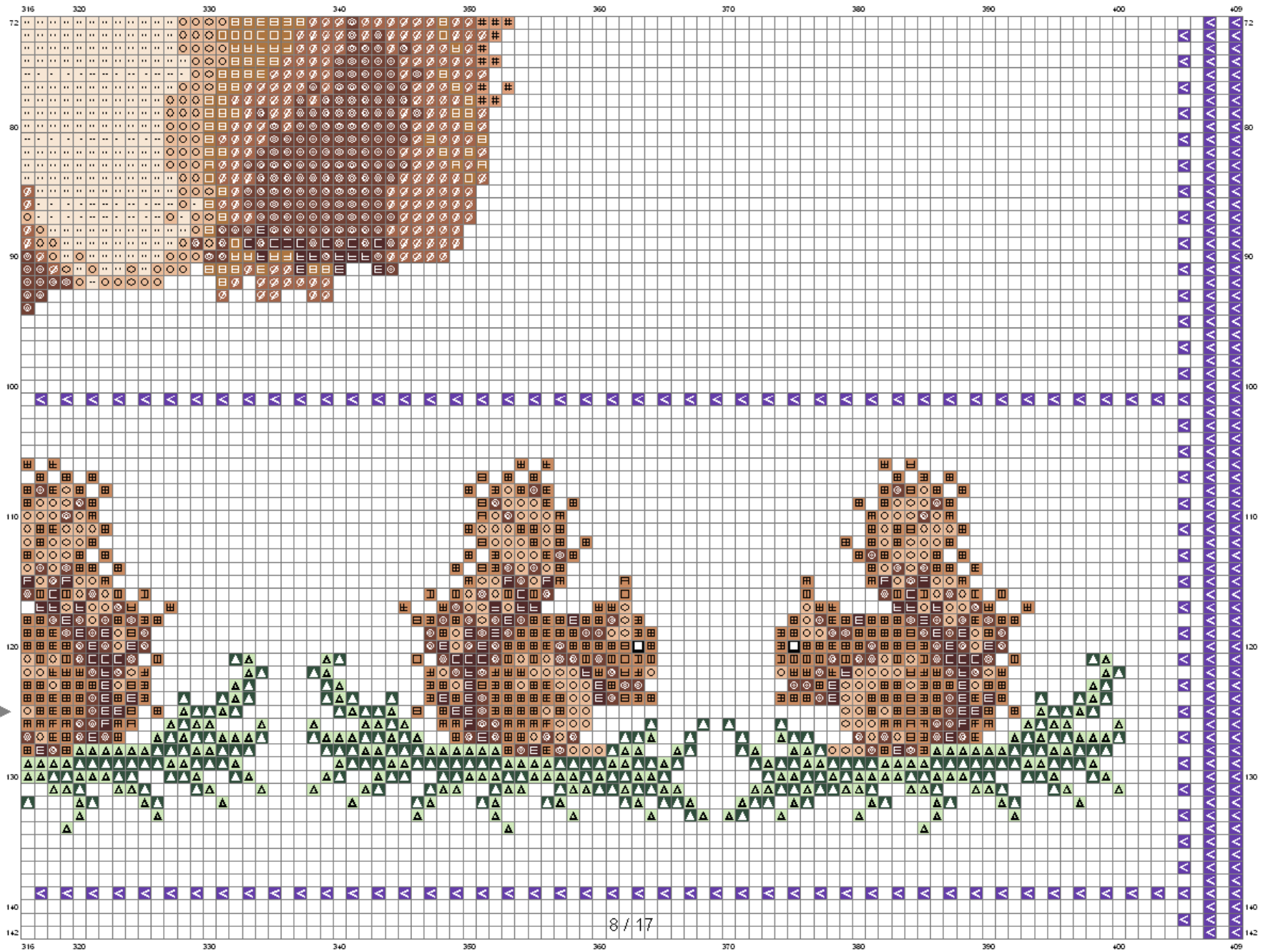
# CENTRE

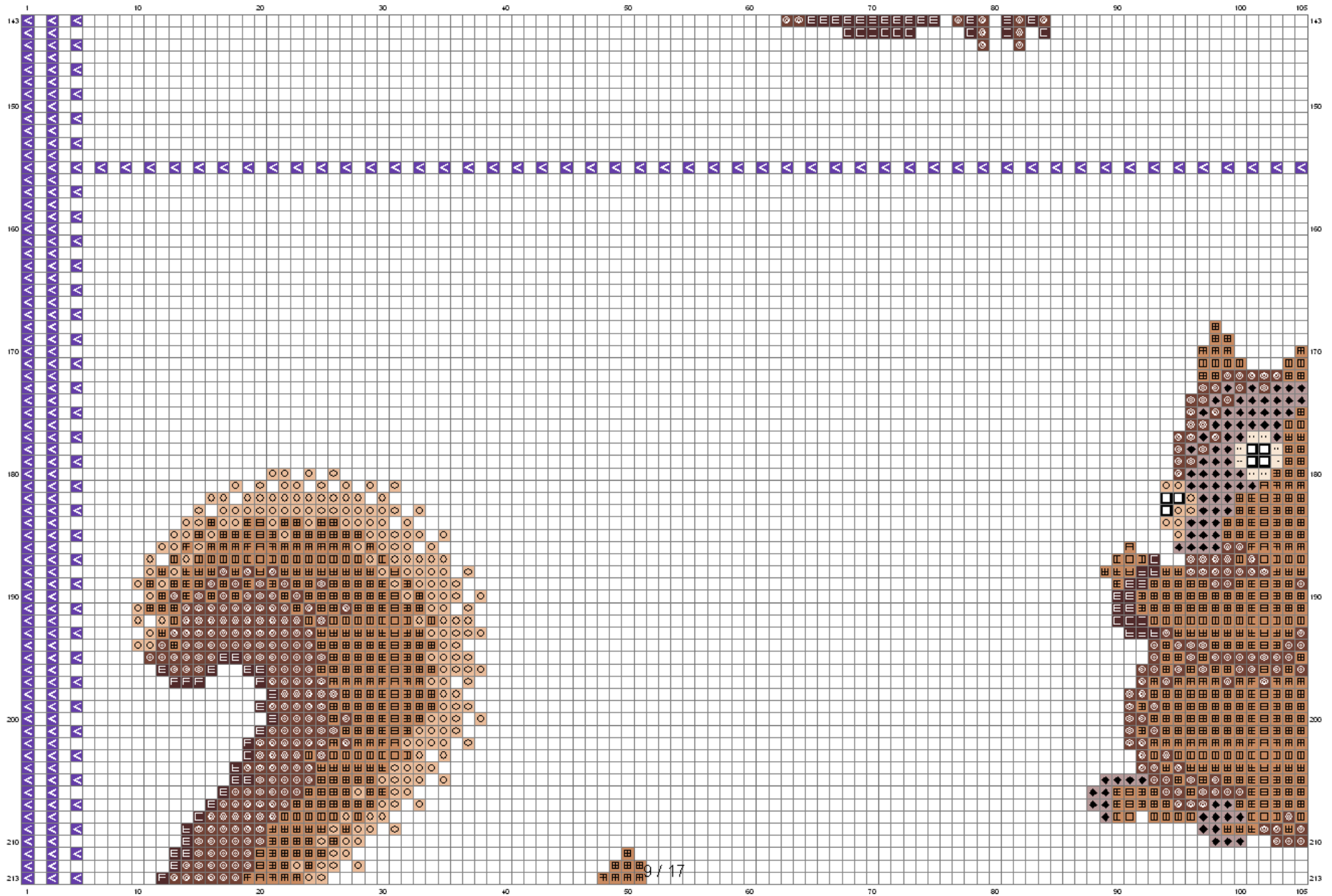


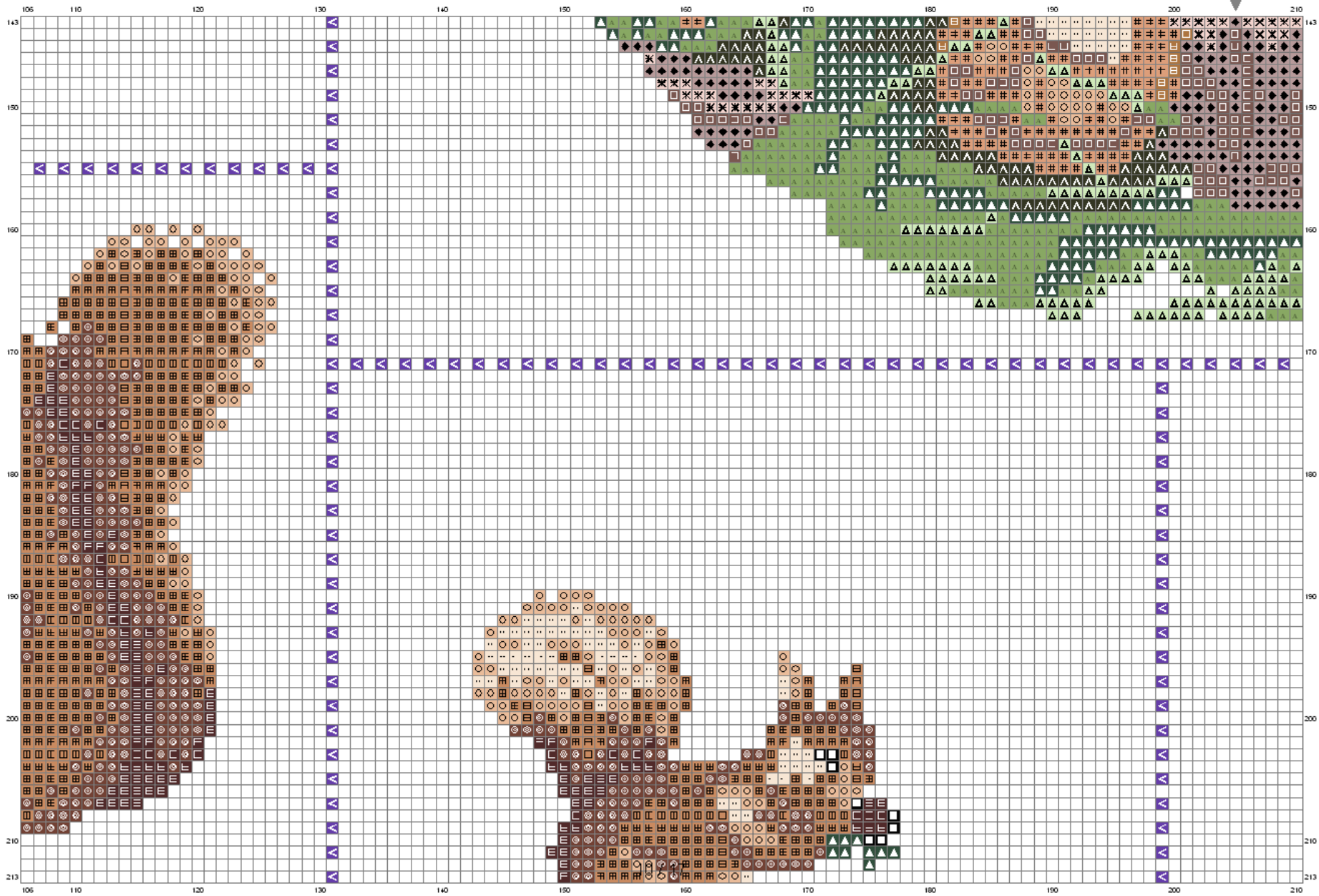


7 / 17

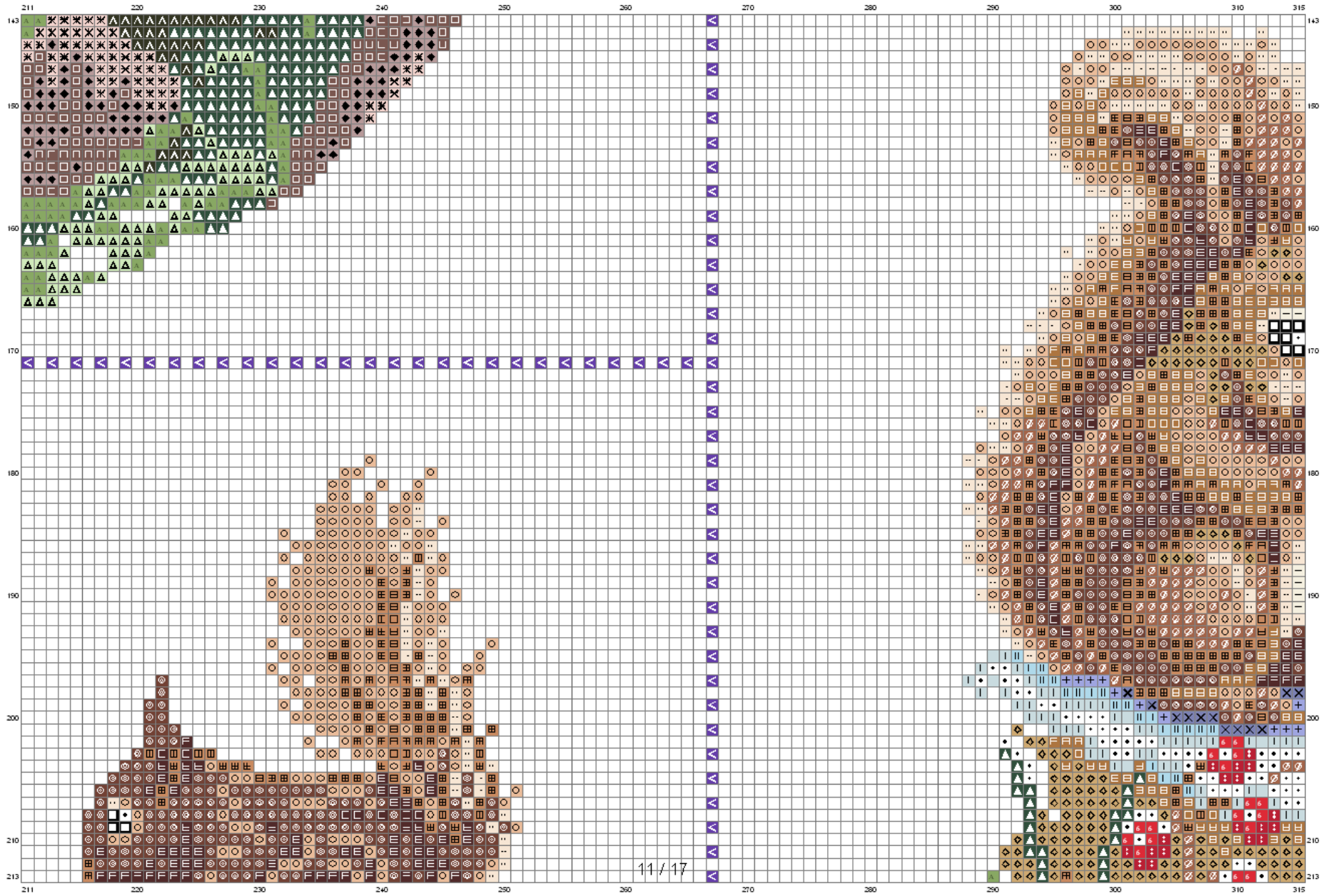


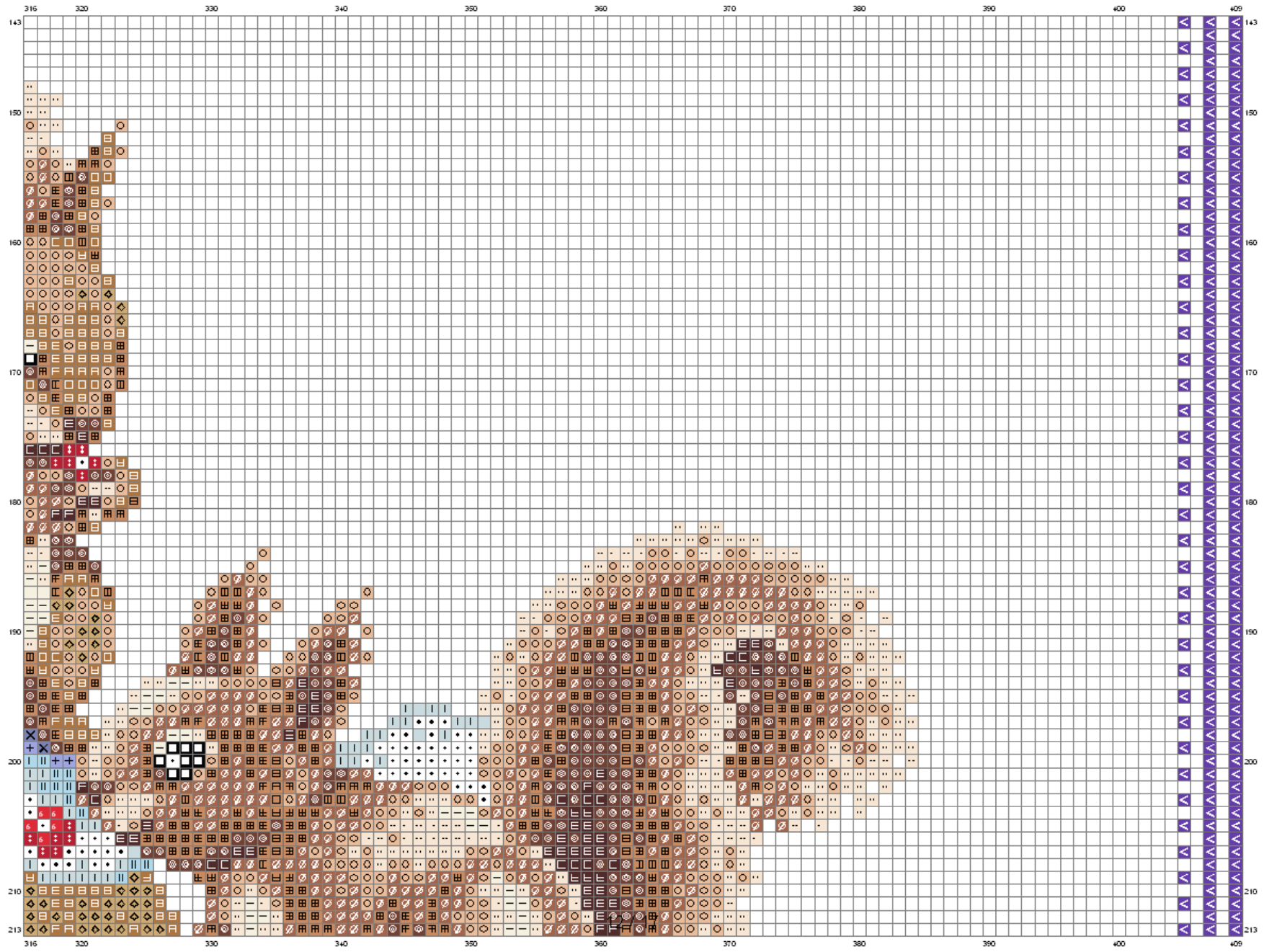


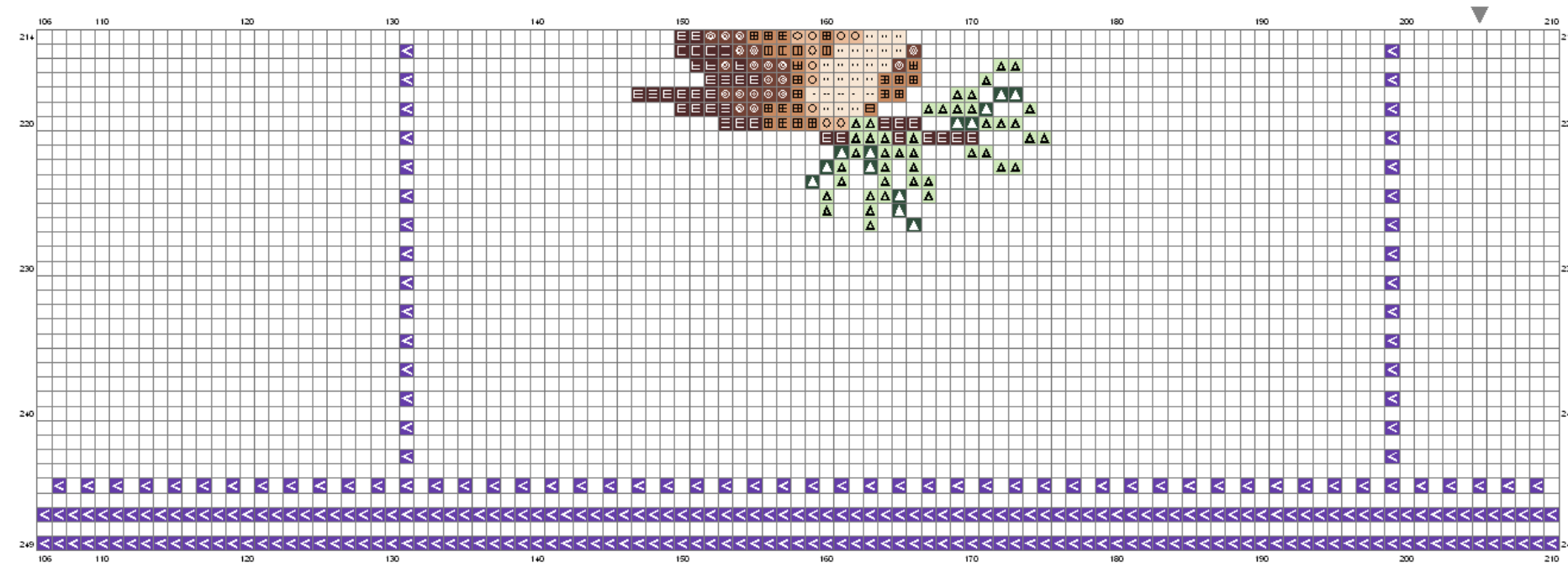
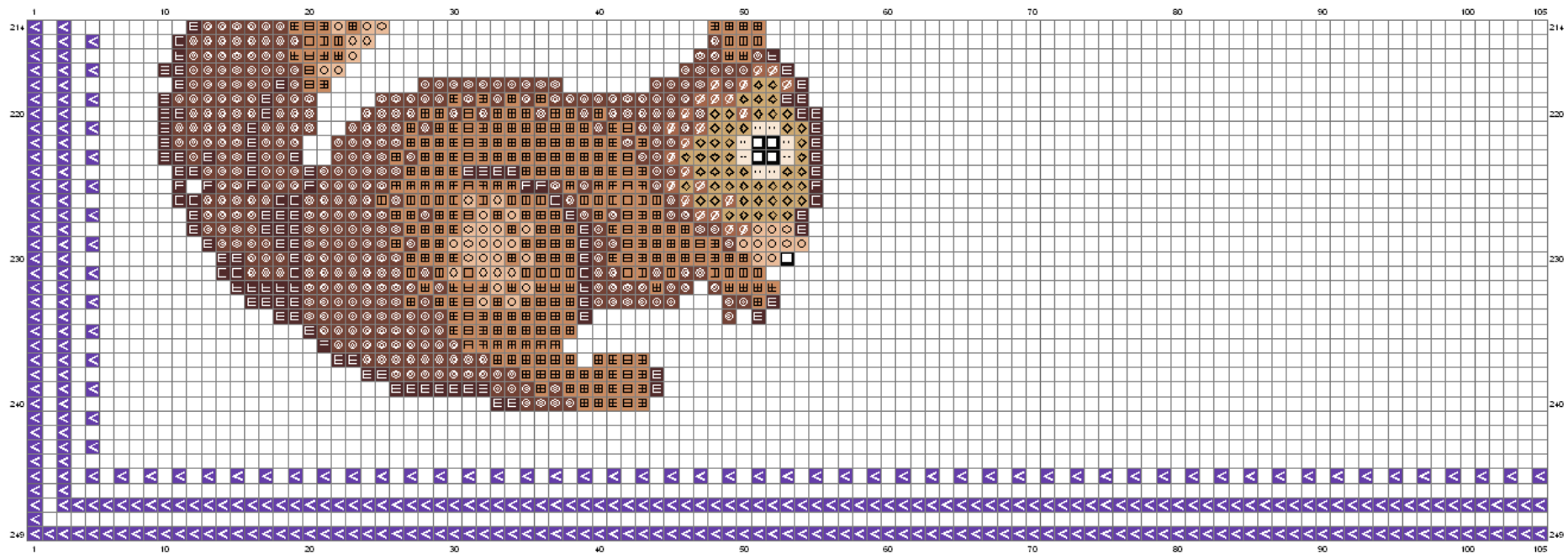




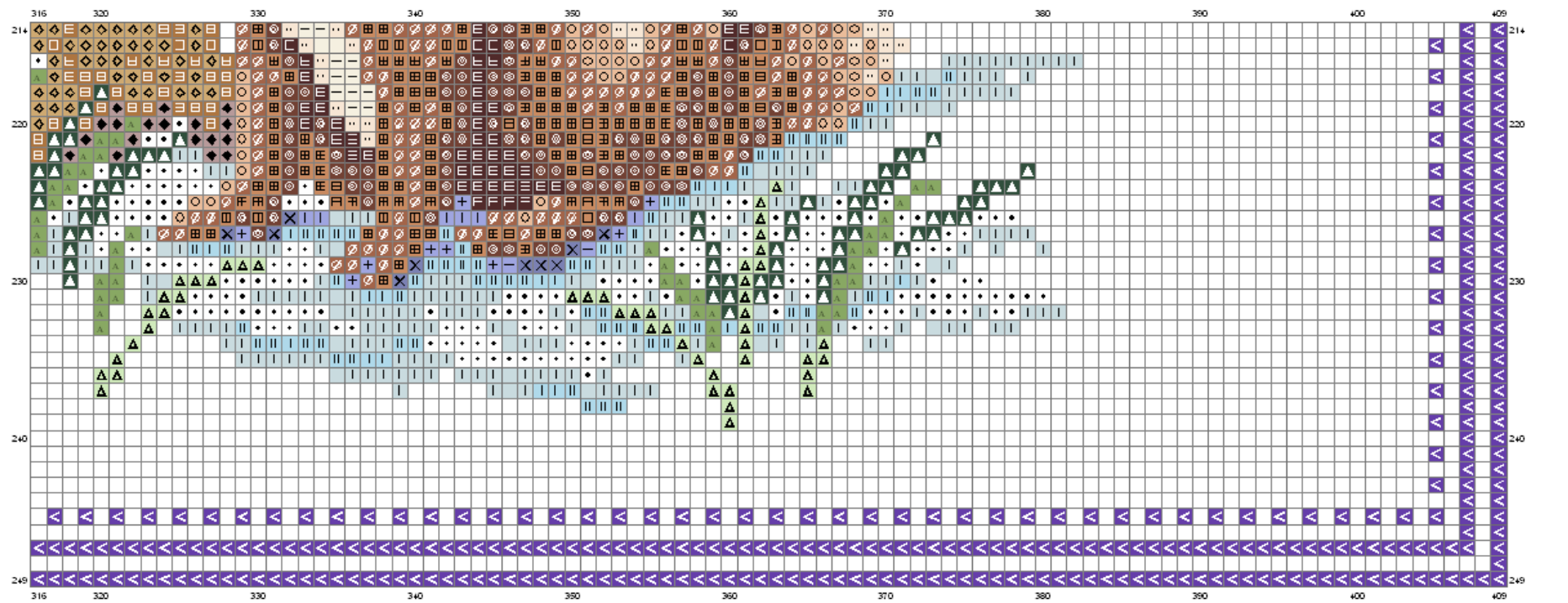
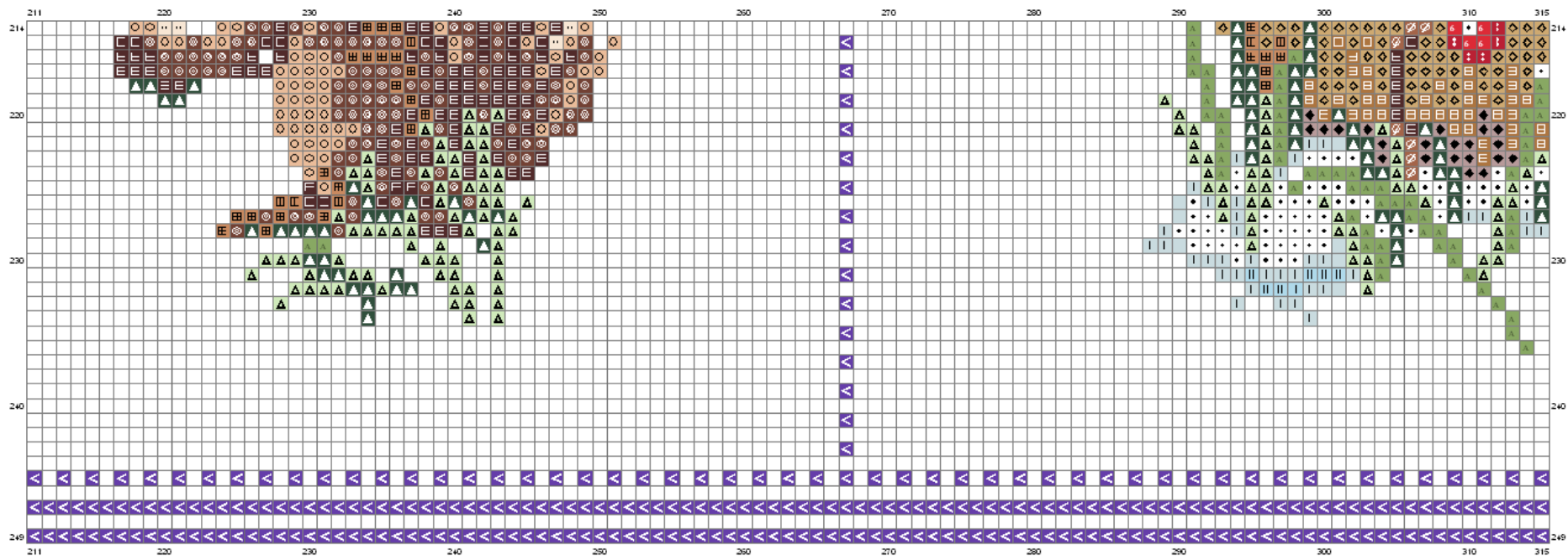












Stitch Count:409w x 249h

Cloth:Linen Cloth's Color:White





























Finished Size:56.80 cm x 34.58 cm (7.2 linen thread/cm)

Total 28 Colors

### Color Table (DMC)

---

#### Cross Stitch

 B5200	(435 ct)	 793	(24 ct)
 310	(91 ct)	 797	(3849 ct)
 318	(34 ct)	 809	(31 ct)
 321	(264 ct)	 827	(128 ct)
 434	(3482 ct)	 839	(426 ct)
 435	(5095 ct)	 840	(633 ct)
 436	(2058 ct)	 842	(264 ct)
 437	(4439 ct)	 895	(2070 ct)
 666	(430 ct)	 898	(3956 ct)
 729	(447 ct)	 934	(226 ct)
 739	(1506 ct)	 3347	(1384 ct)
 746	(54 ct)	 3371	(2452 ct)
 772	(2622 ct)	 3705	(84 ct)
 775	(349 ct)	 3829	(633 ct)

Bon courage !!

[cathy.savoie@hotmail.fr](mailto:cathy.savoie@hotmail.fr)