

<http://cathy73broderies.canalblog.com/>



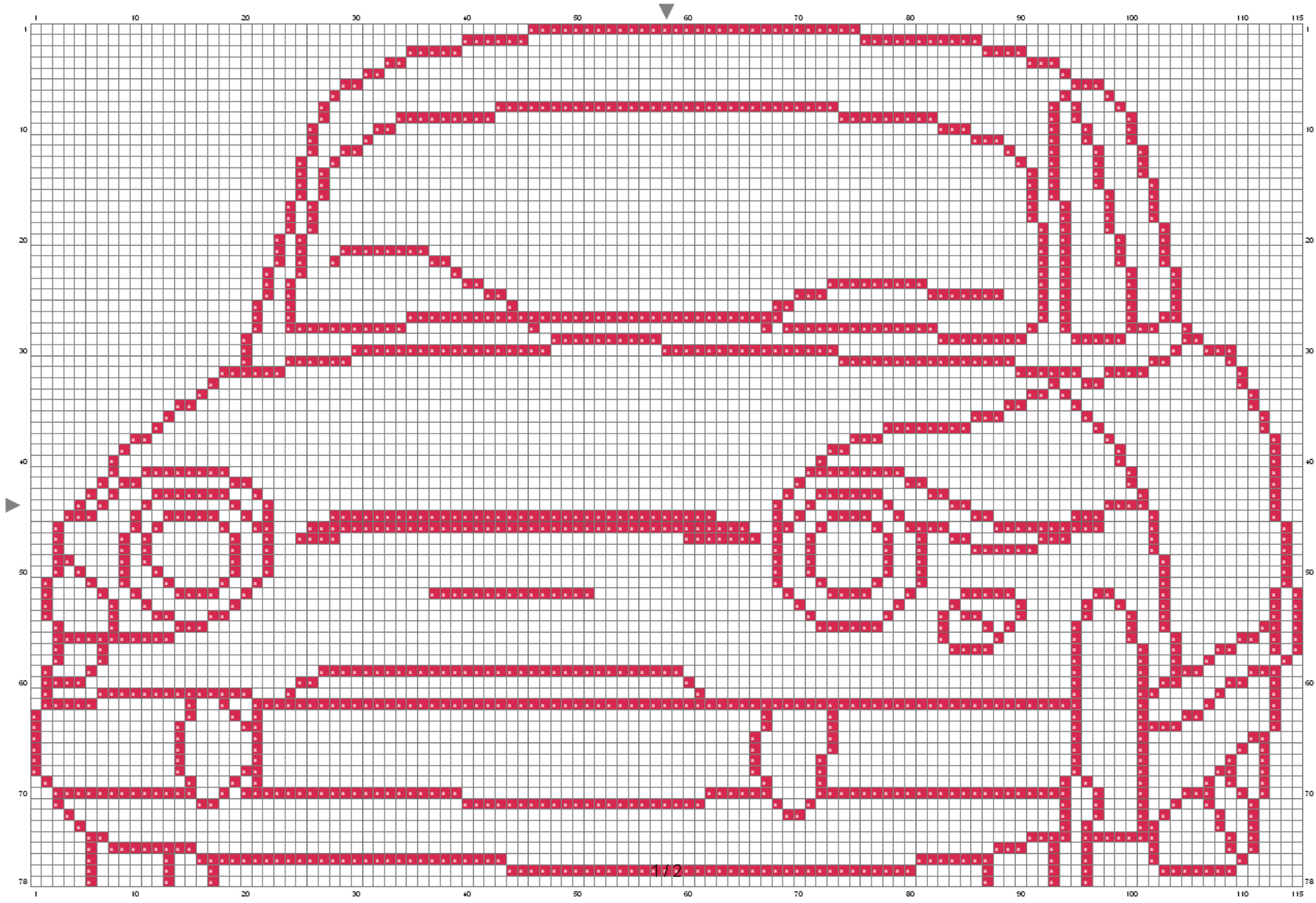
Voiture - Panhard

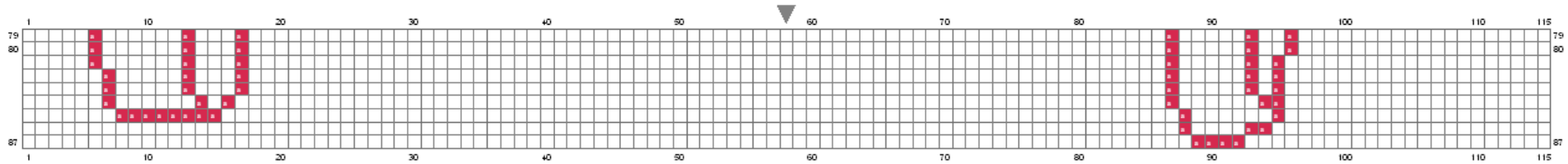


115x87 points



120x66 points





(This chart is printed using KG-Chart LE for Cross Stitch.)

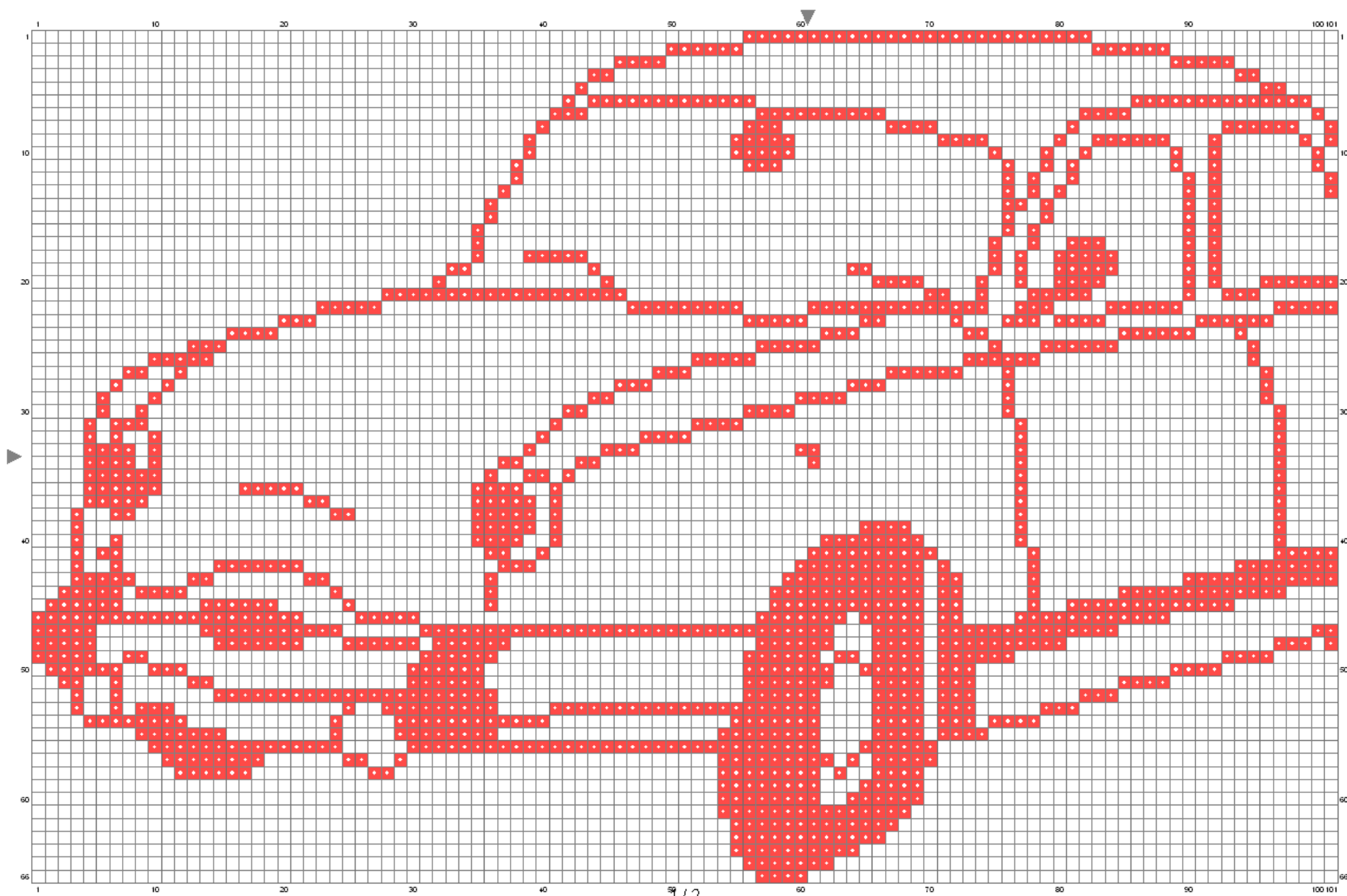
Stitch Count: 115w x 87h // Cloth: Linen Cloth's Color: White

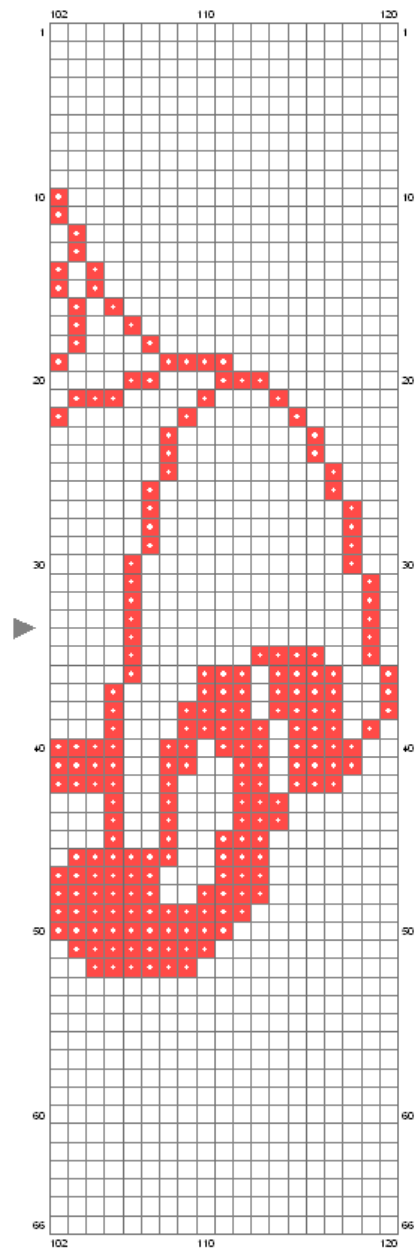
Finished Size: 15.97 cm x 12.08 cm (7.2 linen thread/cm) // Total 1 Colors

Color Table (DMC)

Cross Stitch

a 3831 (1446 ct)





Stitch Count: 120w x 66h
 Cloth:Linen Cloth's Color:White
 Finished Size: 16.66 cm x 9.16 cm
 (7.2 linen thread/cm)

Total 1 Colors

Color Table (DMC)

Cross Stitch

608 (1565 ct)

Bon courage !!
cathy.savoie@hotmail.fr