

<http://cathy73broderies.canalblog.com/>

cathy73



Portraits : Elvis, Sinatra

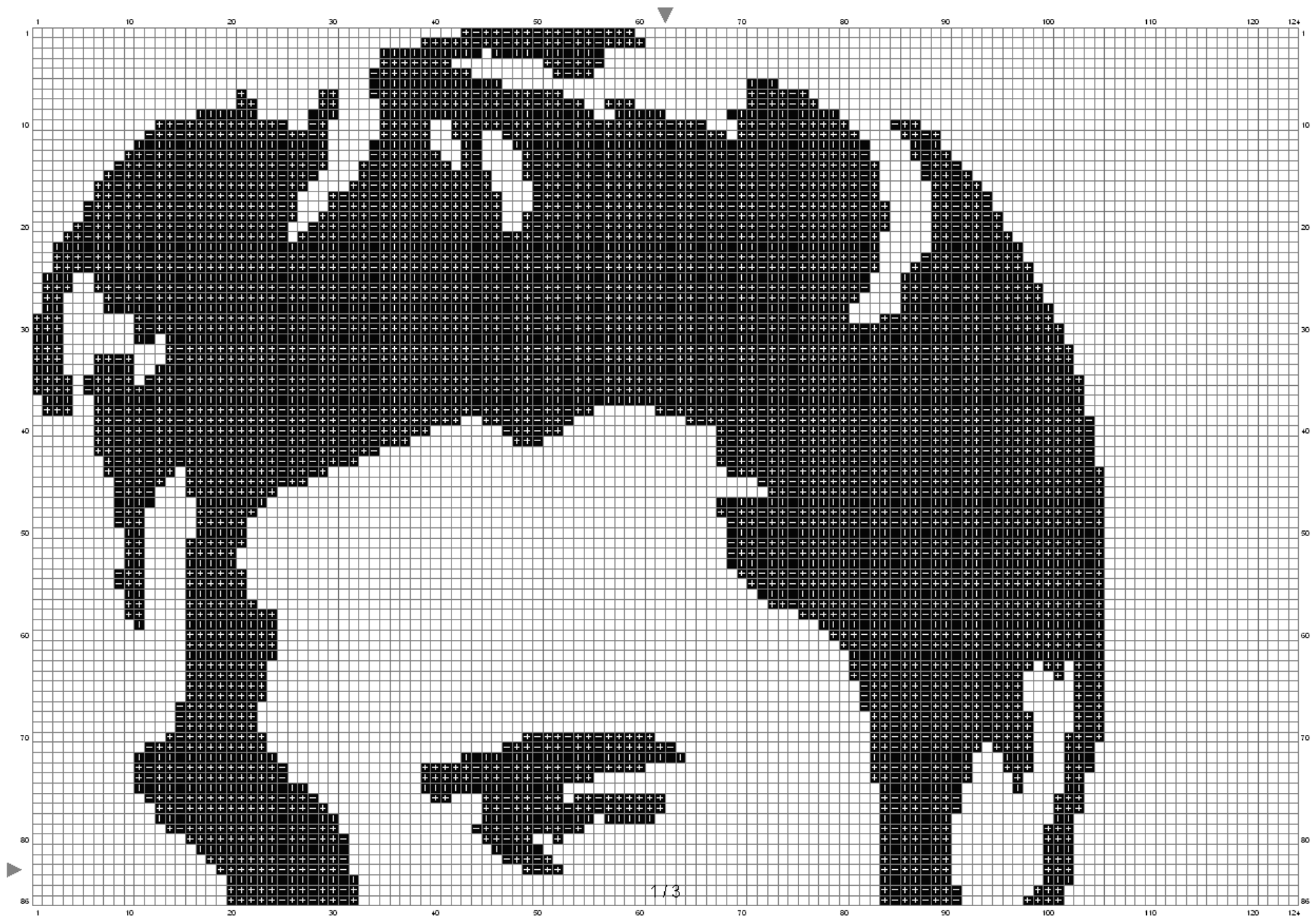


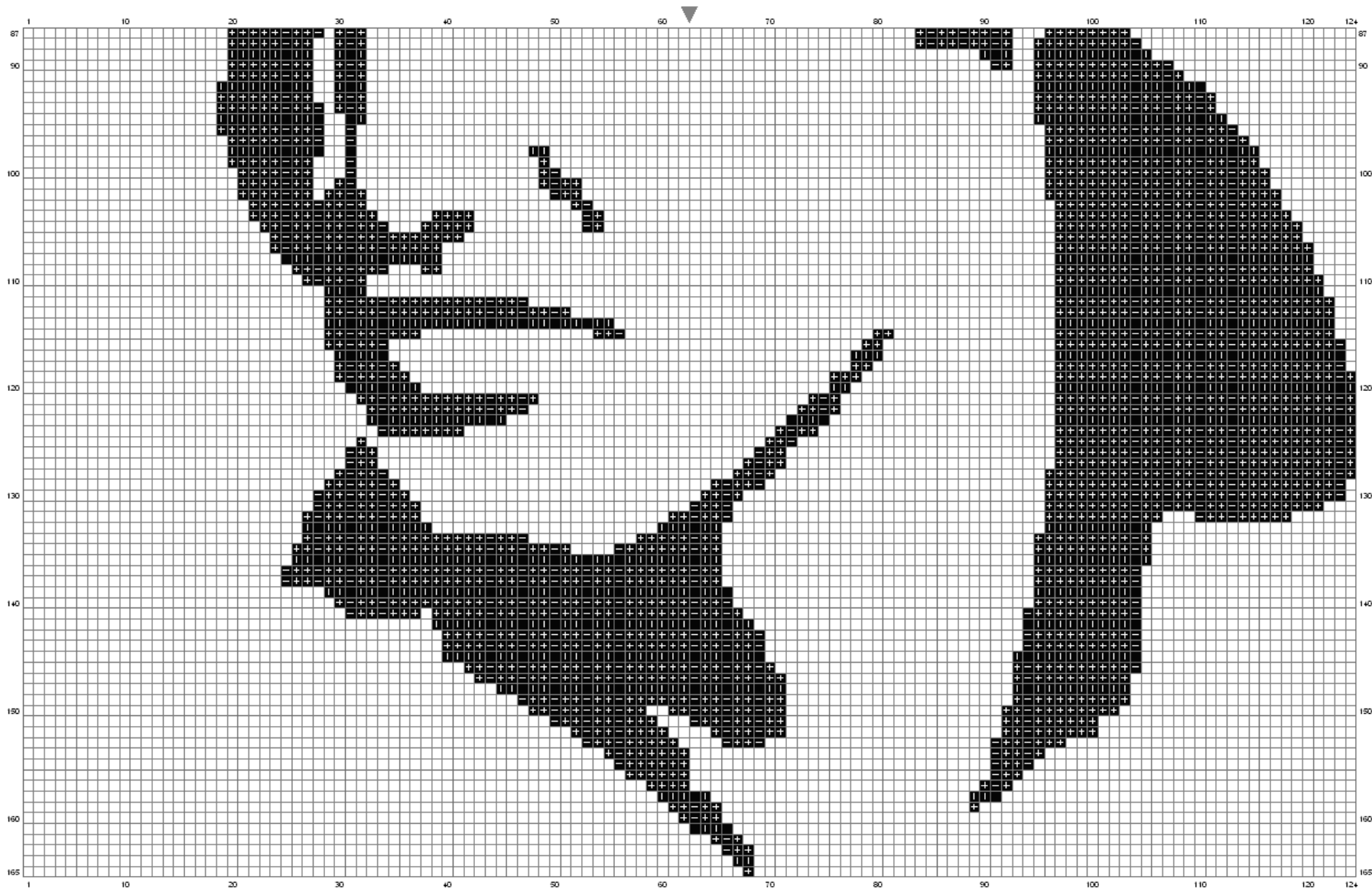
124x165 points



140x136 points

ELVIS

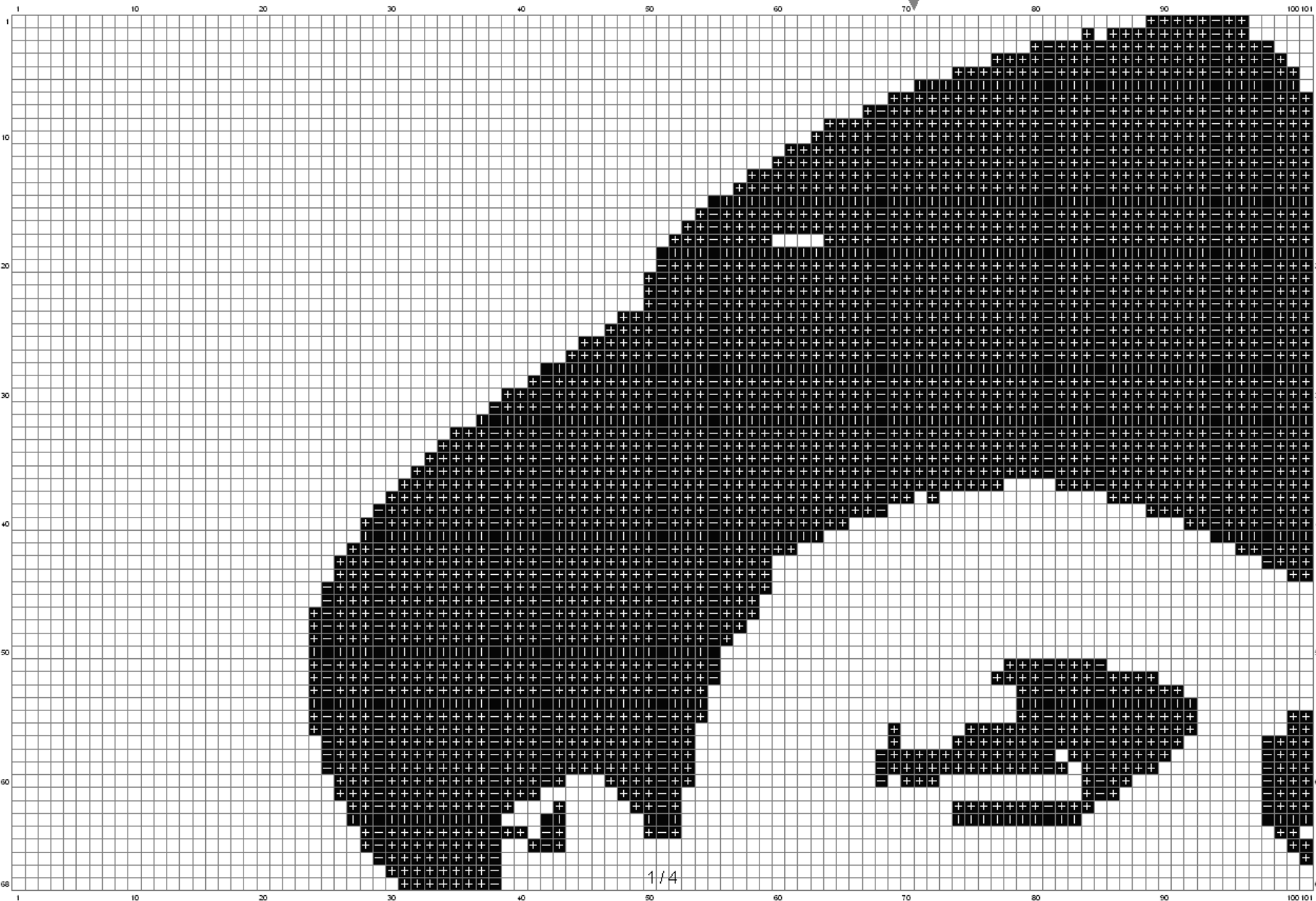


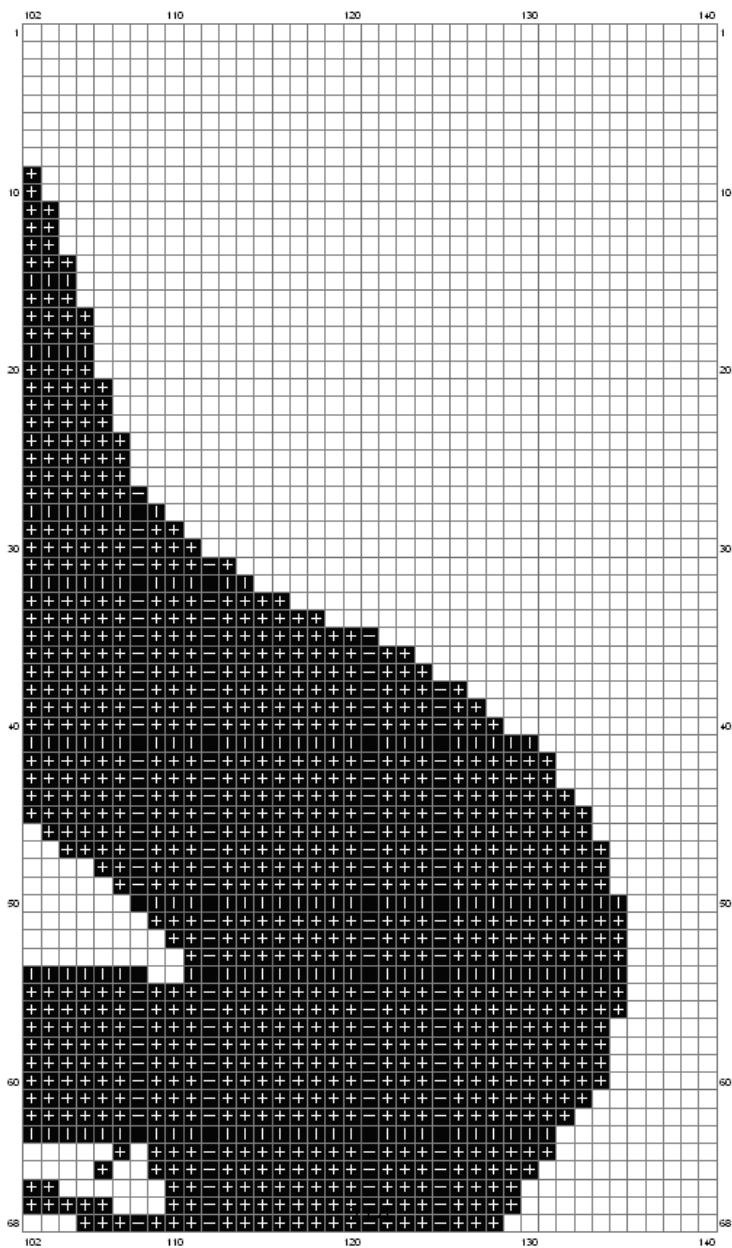


Cross Stitch

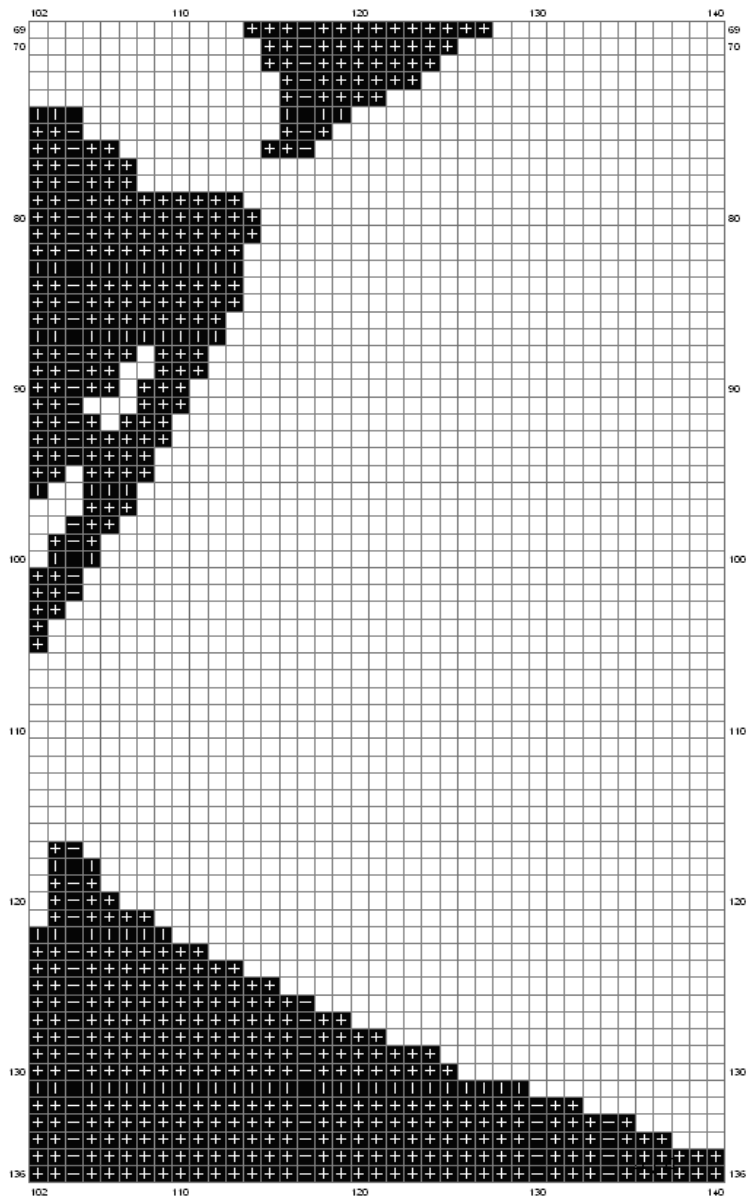
✚ 310 (7276 ct)

SINATRA









Stitch Count: 140w x 136h

Cloth: Linen Cloth's Color: White

Finished Size: 19.44 cm x 18.88 cm

(7.2 linen thread/cm)

Total 1 Colors

Color Table (DMC)

Cross Stitch

⊕ 310 (6405 ct)

Bon courage !!

cathy.savoie@hotmail.fr